



FAIRBANKS NORTH STAR BOROUGH SCHOOL DISTRICT

520 Fifth Ave. Fairbanks, AK 99701 (907) 452-2000, (907) 451-4465 [fax], purchasing@k12northstar.org

INVITATION FOR BIDS Non-Personal Service Contract

Solicitation No. 23-F0019

Greetings:

You are invited to submit your bids for:

MIDNIGHT SUN ELEMENTARY SCHOOL (MSN) FIRE PUMP TRANSFER SWITCH REPLACEMENT

A Pre-Bid /Site Visit will be held at Midnight Sun Elementary School, located at 2301 Bradway Road, North Pole AK 99705, at 3:00 pm on October 30, 2023. **Bids shall be received at the District Purchasing Office located at the School District Administrative Offices, 520 5th Ave, Fairbanks, AK 99701, until 4:30 PM on November 17, 2023 , at which time they shall be opened and publicly ready aloud.**

Method of Award: AGGREGATE

This solicitation consists of the following documents:

SECTION I - INSTRUCTIONS TO BIDDERS.....	1
SECTION II – SERVICE CONTRACT	7
EXHIBIT “A” – Statement of Work IFB # 23-F0019	10
Attachment 1 Stantec Drawings	(4 pages)
Attachment 2 Key Request Procedures	(2 pages)
Attachment 3 Pamphlet 600 Issue 47 State of AK	(39 pages)
EXHIBIT “B” – General Provisions – Service Contracts	62
EXHIBIT “C” – Bid Schedule & Offer	71

FAX 'D BIDS ARE NOT ACCEPTABLE. Bids shall be submitted on the BID SCHEDULE provided in Section IV. The BID SCHEDULE must be completed and submitted in accordance with the instructions provided herein.

Sincerely,

Emily Proper

Purchasing Agent
emily.proper@k12northstar.org
907-452-2000 x11345

SECTION I - INSTRUCTIONS TO BIDDERS

TABLE OF CONTENTS FOR SECTION I

Clause	
1.	AUTHORITY 1
2.	PURPOSE 1
3.	SOLICITATION REVIEW 1
4.	INTERPRETATION OR REPRESENTATIONS 2
5.	BID FORMS 2
6.	PRE-BID CONFERENCE 2
7.	SUBMITTING BIDS 2
8.	RECEIPT AND OPENING OF BIDS 3
9.	LATE BIDS 3
10.	PRICES 3
11.	ALTERNATE BIDS 3
12.	WITHDRAWAL, MODIFICATION, OR CORRECTION 3
13.	VENDOR TAX ID NUMBER 4
14.	ACCEPTANCE OR REJECTION OF BIDS 4
15.	AWARD OF CONTRACT 4
16.	CONTRACT FUNDING 4
17.	QUALIFICATIONS OF OFFERORS 5
18.	RESPONSIVE BID 5
19.	RESPONSIBLE OFFEROR 5
20.	AGGRIEVED BIDDERS 5
21.	ACCEPTANCE PERIOD 5
22.	BID PREPARATION COSTS 5
23.	ITEM SPECIFICATIONS 5
24.	NON-DISCRIMINATION 6
25.	CONDITIONS AT SITE OF WORK 6
26.	FEE CHANGES 6

1. **AUTHORITY**

This solicitation is issued pursuant to Fairbanks North Star Borough School District Board Policy 440 as supplemented by Administrative Regulation 440.12.

2. **PURPOSE**

These instructions outline the procedures to be followed in submission of a bid or quotation, the evaluation of bids and quotations, and the award of a contract. The terms "solicitation", "request for quotation" (RFQ), and "invitation for bids" (IFB) are used interchangeably and have the same meaning in these instructions. The terms "offer", "bid", and "quotation" all refer to a vendor's offer to sell at the prices specified on the bid schedule and are used interchangeably.

3. **SOLICITATION REVIEW**

Offerors shall carefully review this solicitation for ambiguities. Offeror's comments concerning ambiguities in this solicitation must be made in writing and received by the Buyer at least four (4) working days before the due date. Such comments will allow time for an amendment to be issued, if one is required. Offerors should send any such comments to the Buyer listed on the front of this solicitation. Offeror's protests based upon any omissions, errors, or the content of this solicitation will be disallowed if not made known prior to the solicitation opening.

INSTRUCTIONS TO BIDDERS (CONT)

4. **INTERPRETATION OR REPRESENTATIONS**

The FNSB School District assumes no responsibility for any interpretation or representations made by any of its officers or agents unless interpretations or representations are incorporated in a written amendment to this solicitation. No oral interpretation will be made to any Offeror as to the meaning of this solicitation or any part thereof. Every request for such interpretation shall be made in writing to the Buyer. Oral explanations or instructions given before the award of the contract will not be binding. Every interpretation made to an offeror will be in the form of an amendment to this solicitation, but it shall be the offeror's responsibility to make inquiry as to the amendments issued. All amendments shall become part of the contract and all offerors shall acknowledge receipt of the amendments. Failure to acknowledge receipt of the amendment may be cause for rejection of bids as non-responsive.

5. **BID FORMS**

Offerors shall submit bids by completion of the Seller's portion of the contract attached as Section II, including all documents included by reference thereto. Specifically, Offerors shall enter the business name, address, phone and FAX numbers, Alaska business license number in the basic contract header section, complete and sign the signature section of the basic contract, and enter the bid price and signature in Exhibit "C" (Bid Schedule) of the basic contract. The contract submitted must be complete, legible, and manually signed. The School District will execute its portion of the contract (bid) submitted and forward to the successful offerors with a School District Purchase Order as notice to proceed. The enclosed "Amendment Acknowledgement" form will be used to acknowledge receipt of any addenda and submitted with the bid. Unless otherwise authorized herein, emailed or "FAX" bids will not be accepted.

6. **PRE-BID CONFERENCE**

Pre-bid conferences are held to give offerors an opportunity to address deficiencies, defective specifications, and other concerns contained in the bid document. The purpose is to identify and resolve issues that have the potential of generating an award protest based on defective or ambiguous specifications. Unless defective specifications are brought to the FNSB School District's attention at the pre-bid conference, or as stated in the "Solicitation Review" clause, above, protests or appeals of award based on alleged defective specifications will not be favorably considered.

7. **SUBMITTING BIDS**

- a. Bids must be submitted in a sealed envelope, marked and addressed as shown below. Envelopes with bid numbers written on the outside will not be opened until the scheduled date and time. Bids must be received prior to the opening date and time.

| Bidder's Return Address
XXXXXXXXXXXXXXXXXXXX
XXXXXXXXXXXXXXXXXXXX

FNSB School District
Purchasing Department
520 Fifth Ave
Fairbanks, Alaska 99701

Bid No: (insert the bid number [23-F0019] on your envelope)
Opening Date: (insert the opening date on your envelope)

- b. Neither the Fairbanks North Star Borough School District nor its officers or employees shall be responsible for the premature opening or failure to open a bid that is not properly addressed and identified.
- c. The FNSB School District Purchasing Department is located at 520 Fifth Ave, Fairbanks, Alaska, 99701; and is open for business from 8:00 a.m. to 12:00 noon and 1:00 p.m. to 4:30 p.m., Monday through Friday. Acceptance of Special Delivery mail is not available Saturday, Sunday or

INSTRUCTIONS TO BIDDERS (CONT)

holidays. The ultimate responsibility for the delivery of the bid document lies with the bidder. The FNSB School District shall make no concession regarding postal service or any other form of conveyance of the bid document even when timely delivery of the bid fails through no fault of the bidder.

- d. Bidders are encouraged to mail return bids at least five (5) working days prior to bid opening. Bids mailed less than five (5) working days before opening should be sent via Postal Express, DHL Courier Express, or similar service.
- e. This is a suggestion only to minimize late bids received and does not negate the aforementioned disposition of late bids.

8. **RECEIPT AND OPENING OF BIDS**

- a. Bids received prior to the advertised hour of opening will be kept securely sealed. The School District representative whose duty it is to open them will decide when the specified time has arrived, and no bid received thereafter will be considered.
- b. No responsibility will attach to the School District or its representative for the premature opening of, or the failure to open, a bid not properly addressed and identified in accordance with paragraph 1 (above).
- c. At the time and place fixed for the opening of bids, the School District's representative will cause the bids to be opened and publicly read aloud. Bidders and other persons properly interested may be present, in person or in representative.

9. **LATE BIDS**

Bids received after the exact date and time specified for opening shall not be considered, and shall be held unopened by the FNSB School District until after the award of the contract. The FNSB School District reserves the right, at its discretion, to consider bids which have been delayed or mishandled by the FNSB School District.

10. **PRICES**

- a. The offeror shall state prices in the units of purchase specified on the BID SCHEDULE AND OFFER form. Prices quoted for commodities or services must be in U.S. funds and include applicable federal duty, brokerage fees, packaging, and transportation cost to the FOB point so that upon transfer of title the commodity can be utilized, or the services can be provided without further cost.
- b. Prices quoted must be exclusive of federal, state, and local taxes. If the offeror believes that certain taxes are payable by the FNSB School District, the offeror may list such taxes separately, directly below the unit price for the affected item.
- c. The School District shall receive the benefit of any general reduction in Seller's price prior to delivery and in no event shall the School District be charged higher prices than the Seller's similar customers who take delivery in substantially the same amounts and substantially similar circumstances.

11. **ALTERNATE BIDS**

Alternate bids will not be considered unless specifically requested.

12. **WITHDRAWAL, MODIFICATION, OR CORRECTION**

Bids may be modified, corrected, or withdrawn on written, FAX or emailed request if received prior to the time set for bid opening. Bids may not be modified, corrected or withdrawn verbally. The offeror bears the same responsibility for delivery of bid modifications, corrections or withdrawals as for the original document. All modifications, corrections, or requests for withdrawals must be clearly marked as such. The original bid, as modified by such written communication will be considered as the offer. No offeror will be permitted to withdraw his bid after the time set for opening bids.

INSTRUCTIONS TO BIDDERS (CONT)

13. **VENDOR TAX ID NUMBER**

If goods or services procured through this solicitation must be included on a Miscellaneous Tax Statement, as described in the Internal Revenue Code, a valid tax identification number must be provided to the FNSB School District before payment will be made.

14. **ACCEPTANCE OR REJECTION OF BIDS**

- a. The FNSB School District may cancel the solicitation if such cancellation is in the best interest of the FNSB School District.
- b. A bid may be rejected when (1) the bid is not signed, (2) the offeror has failed to perform under some other contract with the FNSB School District, (3) the offeror fails to supply bid or performance bonds, plans, specifications, samples, descriptive literature, etc., when such item is called for in this solicitation, (4) the bid fails to include acknowledgment of all amendments issued, (5) the bid contains an alteration or erasure which is not initialed by the signer, (6) the offeror changes or qualifies a material term or condition of the solicitation.
- c. The FNSB School District has the authority to waive any and all minor deviations or irregularities on any or all bids.
- d. The School District reserves the right to reject all offers and procure the specified supplies or services from contracts let by other government agencies.

15. **AWARD OF CONTRACT**

- a. The resulting contract will be awarded to the responsible offeror submitting the low, responsive bid complying with the requirements of this invitation, provided his bid is reasonable and it is in the best interest of the FNSB School District to accept it. The FNSB School District, however, reserves the right to reject any and all bids and to waive any minor informality or irregularity in bids received whenever such rejection or waiver is in the FNSB School District's best interest.
- b. The FNSB School District reserves the right to reject the bid of an offeror who has previously failed to perform properly or complete on time contracts of a similar nature; to reject the bid of an offeror who is not, in the opinion of the FNSB School District, in a position or qualified to perform the contract; and any or all bids when such rejection is in the best interest of the FNSB School District.
- c. The School District reserves the right to reject any or all bids, to waive deviations from the specifications and to waive informalities in the bids received whenever such rejection or waiver is considered to be in the best interest of the School District.
- d. The School District reserves the right to accept or reject any or all items of any bid, where such acceptance or rejection is appropriate and does not affect the basic bid.
- e. Public notice of award will be made through posting a tabulation of bids/quotations to the School district "Bid Board" located outside the Purchasing Dept. in the Administrative Center.

16. **CONTRACT FUNDING**

Award in part or in whole is contingent upon available funding. In the event adequate funds are not appropriated, available, or allocated by the School Board, the School District reserves the right to cancel at no penalty.

17. **QUALIFICATIONS OF OFFERORS**

At the option of the FNSB School District, and prior to Contract Award, an offeror may be requested to submit a detailed statement of his qualifications, including his previous experience in performing similar or comparable contracts, his business and technical organization, his financial resources and his equipment and plant available to be used in performing the contemplated contract. The FNSB School District shall have the right to take such steps as it deems necessary to determine the ability of the offeror to perform his obligations under the Contract and the offeror shall furnish the FNSB School District all such information and data for this purpose as may be requested. The right is reserved to reject any bid where an investigation

INSTRUCTIONS TO BIDDERS (CONT)

of the available evidence or information does not satisfy the FNSB School District the offeror is qualified to carry out properly the terms of the Contract.

18. **RESPONSIVE BID**

A responsive bid is one that conforms in all material respects to the solicitation. The FNSB School District reserves the right to waive technicalities or minor informalities in determining an offeror's responsiveness.

19. **RESPONSIBLE OFFEROR**

A person who has the capability in all respects to perform fully the contract requirements, and the tenacity, perseverance, experience, integrity, reliability, capacity, facilities, equipment, and credit which will assure good faith performance.

20. **AGGRIEVED OFFERORS**

Appeals of contract awards not requiring School Board action must be submitted not later than close of business five (5) calendar days after the posting the bid results at the Purchasing Office. The appeal must include the name of the person submitting the protest, the name of the offeror represented by that person, the specific bid which is being appealed, a detailed explanation of the reasons for the appeal and the form of relief requested. The aggrieved offeror must serve all other offerors with the notice of the appeal in order to afford them the opportunity to rebut. Failure to give written notice of the appeal provided herein constitutes a waiver by the aggrieved offeror's right of any objection to the award. (FNSB School District Board Policy 442.21 - 442.24; Administrative Regulation 440.12.6.C)

21. **ACCEPTANCE PERIOD**

To provide time for evaluation of offers received and approval of proposed awards, all bids submitted shall remain valid for a period of 60 days.

Any extension of this 60 days acceptance period shall be requested by the District in writing.

22. **BID PREPARATION COSTS**

The FNSB School District is not liable for any costs incurred by the offeror in bid preparation.

23. **ITEM SPECIFICATIONS**

The attached specifications/Statement of Work may indicate specific products to be used in this project. These products reflect items that have been purchased/installed in the past, are of known quality, and are acceptable to the School District. If the products specified are cited in the specifications/Statement of Work as "or equal" or "approved equal", bidders may offer other than that specified if the item offered is equal to that specified in general style, type, quality, workmanship, economy of operation, performance, characteristics, and suitability for the purpose intended. If so, offerors must identify the brand name offered, provide descriptive literature, and be prepared to provide samples if called for during the evaluation. Descriptive literature provided must be of sufficient scope so as to allow the District's representative to make an intelligent determination as to the suitability of the product offered to the District's needs. The District retains the sole right to determine if a product offered is, in fact, equal to that specified in this invitation for bids. If there is any doubt as to the suitability of a product offered on an "or equal" basis, the product will be rejected in favor of an offer which provides the specified product. The offeror warrants the alternative product to be equal or better than the specified item in quality, workmanship, economy of operation, performance, and characteristics; and is suitable for the purpose intended. If the item specifications indicate "no substitute", offers that include only the specified item will be considered.

24. **NON-DISCRIMINATION**

Offerors agree that if awarded a contract under this invitation they shall comply with the applicable provisions of the Federal Civil Rights Act of 1964 and all amendments thereto, the Equal Employment Opportunity Act and all amendments thereto, the Fairbanks North Star Borough School Board Policy, article 441, and all regulations issued thereunder by the Federal and State governments. If the contractor

INSTRUCTIONS TO BIDDERS (CONT)

fails to comply with such acts and regulations, the School District shall have the right to immediately terminate this contract.

25. **CONDITIONS AT SITE OF WORK**

Offerors must visit the premises to ascertain pertinent conditions (readily determined by inspection and inquiry), such as the area, location, accessibility and general character of the premises. Execution of the Contract by the Offeror shall in no way relieve him of any obligation under it due to his failure to receive or examine any form of legal instrument or to visit the premises and acquaint himself with the conditions there existing and the School District will be justified in rejecting any claim based on the facts regarding which he should have been on notice as a result thereof.

26. **FEE CHANGES**

In the event the Fairbanks North Star Borough changes the regulator fee(s) during the life of this contract the Seller may pass on to the Buyer verifiable increases in its costs. Conversely, the Seller shall pass on to the Buyer any decrease of like costs. The Seller shall not invoice the Buyer at an increased rate unless the fee increase has been submitted to the Buyer, and approved by the Contract Administrator in advance. The Seller shall be prepared to provide the Buyer complete cost data to support price changes. The Buyer reserves the right to terminate this contract, in whole or in part, if the Seller increases prices. The Buyer reserves the right, at its option, to audit the Seller's financial records as they pertain to administration of this clause.

SECTION II – SERVICE CONTRACT

IFB # 23- F0019

TABLE OF CONTENTS
SERVICE CONTRACT

Parties to Contract

Basic Contract

1	SUPERSEDING EFFECT	7
2	SCOPE OF WORK	8
3	PERIOD OF PERFORMANCE	8
4	CONSIDERATION AND PAYMENT	8
5	INSPECTION AND ACCEPTANCE	8
6	DOCUMENT INCORPORATED BY REFERENCE	8
7	ORDER OF PRECEDENCE	8
8	NOTICES AND CORRESPONDENCE	8

Signatures

Exhibit “A” – Statement of Work IFB # 23-F0019

Exhibit “B” – General Provisions – Service Contracts

Exhibit “C” – Payment Schedule

BETWEEN Fairbanks North Star Borough School District
A Political Subdivision of the State of Alaska
Having a place of business at
520 5th Ave
Fairbanks, AK 99701
Hereinafter referred to as “Buyer”

AND

a _____ Corporation having a place of business at
(State)

(Phone)

(FAX)

(E-mail)

(Alaska Business License Number)

hereinafter referred to as “Seller”

WITNESSETH THAT:

IN CONSIDERATION OF the promises and mutual covenants and agreements herein contained, the parties hereto agree as follows:

CONDITIONS OF PURCHASE: GOODS (CONT)

1 **SUPERSEDING EFFECT**

This contract supersedes all prior oral or written agreements, if any, between the parties and constitutes the entire agreement between the parties with respect to the work to be performed under this Contract.

2 **SCOPE OF WORK**

The Seller shall furnish all the services and materials necessary to perform the work associated with Midnight Sun Elementary School fire pump transfer switch replacement, as set forth in Exhibit "A" entitled "Statement of Work IFB # 23-F0019 hereinafter referred to as the "SOW."

3 **PERIOD OF PERFORMANCE**

- a Work to be accomplished under this Contract shall commence upon execution of the contract, and shall be completed by July 31, 2024.
- b Specific periods of performance, if any, and completion dates for each Contract line item are set forth in the SOW.

4 **CONSIDERATION AND PAYMENT**

Payment will be made in accordance with Exhibit "C".

5 **INSPECTION AND ACCEPTANCE**

All work performed under this Contract shall be inspected and accepted in accordance with the provisions of the SOW.

6 **DOCUMENT INCORPORATED BY REFERENCE**

The following documents are hereby incorporated by reference:

- a Exhibit "A" entitled "Statement of Work No. IFB # 23-F0019
- b Exhibit "B" entitled "General Provisions – Service Contracts"
- c Exhibit "C" entitled "Bid Schedule"

7 **ORDER OF PRECEDENCE**

The following order of precedence shall govern in the event of a conflict between documents of this Contract:

- a Articles 1 through 8 hereof.
- b Exhibit "A" entitled "Statement of Work No. IFB # 23-F0019
- c Exhibit "B" entitled "General Provisions – Service Contracts"
- d Exhibit "C" entitled "Bid Schedule"

8 **NOTICES AND CORRESPONDENCE**

All notices and correspondence shall be sent by either party to the other party, in all matters dealing with this Contract, to the following addresses:

CONDITIONS OF PURCHASE: GOODS (CONT)

a To the Buyer: FNSB School District
520 Fifth Ave
Fairbanks, AK 99701

Reference: IFB# 23-F0019; MSN Fire Pump Transfer Switch Replacement
Attention: Clay Anderson, Project Manager; clay.anderson@k12northstar.org and,
Attention: Purchasing; purchasing@k12northstar.org

b To the Seller: _____

Attention: _____
Email: _____

Or any other address provided prior written notice is given to the other party.

IN WITNESS WHEREOF, the parties hereto have executed this Contract which is effective as of Attest: _____

FNSB School District

Signature _____
Buyer

Date _____

Attest: _____
(Bidder's typed or printed name)

Signature _____
(Individual authorized to bind firm)

Title _____

Date _____
(Date Signed)

EXHIBIT “A” – Statement of Work IFB # 23-F0019

TABLE OF CONTENTS

Clause	
SCOPE OF WORK	10
BACKGROUND	10
LOCATION AND CONTACTS:	10
DESCRIPTION OF WORK	10
OTHER CONDITIONS	15
EVALUATION OF BIDS	15

SCOPE OF WORK

Selectively demolish the existing fire pump transfer switch and install a new transfer switch according to the design/contract drawings and specifications titled “Midnight Sun Elementary Fire Pump transfer switch replacement”

BACKGROUND

- a. The purpose of this contract is to replace the existing fire pump transfer switch which has malfunctioned
- b. The facilities involved include School and Administrative buildings at Midnight Sun Elementary School.
- c. The School District (Buyer) does not own the equipment, nor employ the staff necessary to perform this service.
- d. Services requested under this contract are critical to the mission of the District, or required per local, State, or Federal regulations.

LOCATION AND CONTACTS:

Midnight Sun Elementary School 2301 Bradway Road North Pole Alaska 99705
School District Contract Administrator: Clay Anderson, Project Manager
cell phone: 907-590-3776
office phone: 907-452-4461 extension 15238
email: clay.anderson@k12northstar.org

DESCRIPTION OF WORK

1. GENERAL

- 1.1. All work shall conform to the latest edition of the National Electrical Code (NEC) and all State and Local codes and code amendments.
- 1.2. Obtain all permits and pay all fees required by this work.

Statement of Work (cont.)

- 1.3. Maintain responsibility for the condition of all materials used. If lost, stolen, or damaged, materials shall be replaced at no extra cost to the owner.
- 1.4. All work shall be performed by workmen skilled in and regularly employed in the trade. Install all products in a neat and workmanlike manner, per manufacturer's instructions, and in compliance with NECA 1" standard practice for good workmanship in electrical contracting" as a minimum. Comply with NFPA 70E safety rules as a minimum.
- 1.5. Perform all cutting, drilling, and patching of walls and floors necessary for a complete installation.
- 1.6. Remove all debris and surplus material from the premises as progress of the work dictates.
- 1.7. All electrical equipment shall be listed by a nationally recognized testing laboratory (NRTL).

2. PRODUCTS AND SUBMITTALS

- 2.1. Submit product data, certificates, and shop drawings to the engineer. Provide submittals for wiring devices, conductors, equipment, alarm panels and devices.
- 2.2. All products shall be new and listed or labeled by a nationally recognized testing laboratory (NRTL) for the intended use, unless otherwise indicated.
- 2.3. Match existing where a uniform installation exists unless otherwise indicated or approved.
- 2.4. Provide similar items from the same manufacturer throughout the project.

3. DEMOLITION

- 3.1 Remove, store, clean, reinstall, reconnect, and make operational components indicated for new installation.

4. RACEWAYS AND BOXES

- 4.1. Conduit types shall be:
 - 4.1.1. Interior exposed below 4' AFF: RMC or IMC.
 - 4.1.2. Interior exposed above 4' AFF: RMC, IMC, or EMT.
 - 4.1.3. Interior concealed: RMC, IMC, or EMT.
- 4.2. Connections to equipment requiring flexibility or subject to vibration shall be:
 - 4.2.1. Interior, dry locations: FMC or LFMC.
 - 4.2.2. Interior, damp or wet locations: LFMC.
- 4.3. Minimum conduit size shall be ¾"
- 4.4. Conduit fittings shall be galvanized steel and have nylon insulated throats.
- 4.5. Conduit fittings for RMC and IMC shall be threaded type.
- 4.6. Conduit fittings for EMT shall be steel compression type.
- 4.7. Penetrations through Fire-Rated assemblies shall be sealed to maintain the fire rating.
- 4.8. Conduits shall be cut square and end reamed to remove burrs.
- 4.9. Maximum conduit bend shall be 90 degrees, with not more than three 90 degree bends or equivalent

Statement of Work (cont.)

between pull points.

- 4.10. Junction and device boxes shall be suitable for use at the installed location and arranged to accept the intended device or equipment. Junction and device boxes shall be:

- 4.10.1. Interior exposed below 5' AFF: galvanized cast iron or cast aluminum with threaded conduit hubs.

- 4.10.2. Interior exposed above 5' AFF: galvanized sheet steel.

- 4.10.3. Interior concealed: galvanized sheet steel.

- 4.11. The entire conduit system shall be mechanically and electrically continuous from the source to all devices and grounded in accordance with the NEC.

- 4.12. Install conduit and devices concealed and flush in finished areas. Conduit and devices may be exposed in unfinished areas and mechanical rooms, and as indicated on the drawings. .

5. CONDUCTORS AND CABLES

- 5.1. Conductors shall be copper, solid or stranded for 12 AWG and smaller, stranded for 10 AWG and larger. Insulation shall be:

- 5.1.1. Interior, heated: THHN-THWN OR XHHW.

- 5.1.2. Interior, Unheated: XHHW.

- 5.1.3. Exterior: XHHW.

- 5.2. Minimum conductor sizes shall be 12 AWG for power and 18AWG for low-voltage and controls. Circuit conductors shall be increased in size for voltage drop based on the circuit length, 12AWG up to 100', 10 AWG up to 200', 8 AWG over 200'. Increase size of conduit as required for larger conductor sizes.

- 5.3. Provide a separate green insulated equipment grounding conductor in all power and control circuits. Increase size of grounding conductor proportionally as required where power conductors are oversized for voltage drop.

6. COMBINATION FIRE PUMP - AUTOMATIC TRANSFER SWITCH

- 6.1. Fire pump controller with integral automatic transfer switch.

- 6.2. The combination fire pump controller shall be UL listed and FM approved.

- 6.3. Magnetic controller sized for across-the-line starting.

- 6.4. Emergency start with mechanically operated start handle that closes and retains the motor run contactor independent of electric or pressure actuators.

- 6.5. Method of stopping: automatic and nonautomatic shutdown after automatic starting.

- 6.6. Capacity: rated for fire-pump-driver horsepower and short-circuit-current (withstand) rating equal to or greater than short-circuit current available at controller location.

- 6.7. Method of isolation and overcurrent protection: interlocked isolating switch and nonthermal MCCB; with a common, externally mounted operating handle, and providing locked-rotor protection.

- 6.8. Door-Mounted Operator interface and controls:

- 6.8.1. Monitor, display, and control the devices, alarms, functions, and operations listed in NFPA 20 as required for drivers and controller types used.

Statement of Work (cont.)

6.8.2. Method of control and indication:

6.8.2.1. Microprocessor-based logic controller, with multiline digital readout

6.8.2.2. Membrane keypad.

6.8.2.3. LED alarm and status indicating lights

6.9. Local Alarm and Status indications:

6.9.1. Controller Power ON.

6.9.2. Motor running condition.

6.9.3. Loss-of-Line power.

6.9.4. Line-Power phase reversal.

6.9.5. Line-Power Single-Phase condition.

6.10. Audible alarm, with silence push button.

6.11. Nonautomatic start and stop push buttons or switches.

6.12. Operator interface communications ports: USB and Ethernet

6.13. Automatic transfer switch

6.13.1. Complies with NFPA 20

6.13.2. Integral with Controller as listed combination Fire-Pump Controller and Power transfer switch.

6.13.3. Automatically transfers Fire-Pump controller from normal power supply to alternate power supply in event of power failure.

6.13.4. Allows manual transfer from one source to the other.

6.13.5. Alternate-Source isolating and disconnecting means:

6.13.5.1. Integral molded-case switch with an externally mounted operating handle.

6.13.5.2. Mechanically interlocked isolation switch and circuit breaker rated at a minimum of 115 percent of rated motor full-load current, with an externally mounted operating handle; circuit breaker must be provided with nonthermal sensing, instantaneous-only short-circuit overcurrent protection to comply with available fault currents.

6.13.6. Local alarm and status indications:

6.13.6.1. Normal Source Available

6.13.6.2. Alternate source available.

6.13.6.3. In Normal position.

6.13.6.4. In alternate position.

6.13.6.5. Isolation means open

6.13.6.6. Audible alarm, with silence push button.

Statement of Work (cont.)

6.13.6.7. Nonautomatic (manual, nonelectric) means of transfer.

6.13.6.8. Engine Test Push Button.

6.13.6.9. Start Generator output contacts.

6.14. Programming, set up, and test Fire Pump controller in accordance with FM global property loss prevention data sheet 3-7, fire protection pumps, including automatic starting at a set water pressure and manual stopping.

6.15. Test Fire Pump controller in accordance with NFPA 20 and manufacturer's startup and testing procedures.

7. FIRE ALARM

7.1. Existing fire alarm system is a non-addressable zoned system, Edwards/General Signal 5721B.

7.2. All devices associated with the sprinkler system are currently connected to Zone 9 and shall remain in place.

7.3. Connect new Fire Pump controller to existing Zone 9.

7.4. Test modified Fire Alarm system Zone 9 in accordance with NFPA 72. Submit all required documentation to the authority having jurisdiction (AHJ) and the owner.

8. IDENTIFICATION

8.1. Color code secondary phase conductors for feeders and branch circuits. Coloring shall be factory applied for small conductors. Phase conductors 8 AWG and larger and neutral and ground conductors 4 AWG and larger may be field applied using colored pressure-sensitive plastic tape. Conductors shall be colored: 480/277-Volt Three Phase Phase A: Brown Phase B: Orange Phase C: Yellow Neutral: Gray Ground: Green.

8.2. Power circuits shall be identified in junction and device boxes, manholes, and panelboards with the panel and circuit number. Alarm circuits shall be identified in junction and device boxes, manholes, equipment racks, and panels with the circuit designation. Identification shall be by:

8.2.1. Interior: pre-printed wraparound adhesive labels.

8.3. Equipment labels shall be engraved plastic laminate, white lettering on a black field. Text shall be ½" high on a 1-½" high label. Labels with two lines of text shall use a 2" high label. Equipment labels shall be placed on switchboards, panelboards, motor starters, disconnects, contactors, and system panels and cabinets.

8.4. In unfinished and concealed areas, paint covers of junction boxes to identify use:

8.4.1. Fire alarm: Red

8.4.2. Low-Voltage Controls: Green

9. PROJECT COMPLETION / TESTING AND ACCEPTANCE

9.1. Upon project completion, clean all electrical equipment and fixtures and replace or repair any items scratched, dented, or otherwise disfigured.

9.2. Test all systems to assure proper operation. Test modified portions of existing systems unless otherwise directed.

9.3. Notify Owner of test schedule and provide written test reports. Include deficiencies identified and actions taken to obtain acceptable results.

Statement of Work (cont.)

9.4. During final inspection, demonstrate satisfactory operation of entire installation. Repair or replace failed items and repair all construction damage.

9.5. Maintain red-lined As-Built record drawings as project progresses and deliver to Owner.

End of Section

OTHER CONDITIONS

a. REDUCED SERVICE PERIODS

There are periods when School sites will require reduced services. The Buyer reserves the right to increase or decrease the volume of services requested at no penalty to the District.

b. EQUIPMENT

The Buyer reserves the right to change the equipment required.

c. LOCATION ADDITIONS/DELETIONS

The Buyer reserves the right to add or delete service locations as needed.

d. HAZARDOUS MATERIALS

The Buyer has established guidelines for the disposal of hazardous material. Hazardous material shall not be transported by the contractor.

e. VEHICLE REQUIREMENTS

Vehicles used in the performance of this contract shall conform to DOT and Public Safety published regulations and shall meet all weight, height and other restrictions as set forth by those agencies.

f. REQUEST FOR KEY PROCEDURES

Requests for keys to Midnight Sun Elementary should follow the procedures outlined on Attachment 3. All requests should be made to Clay Anderson, FMD Constructions and Project Manager.

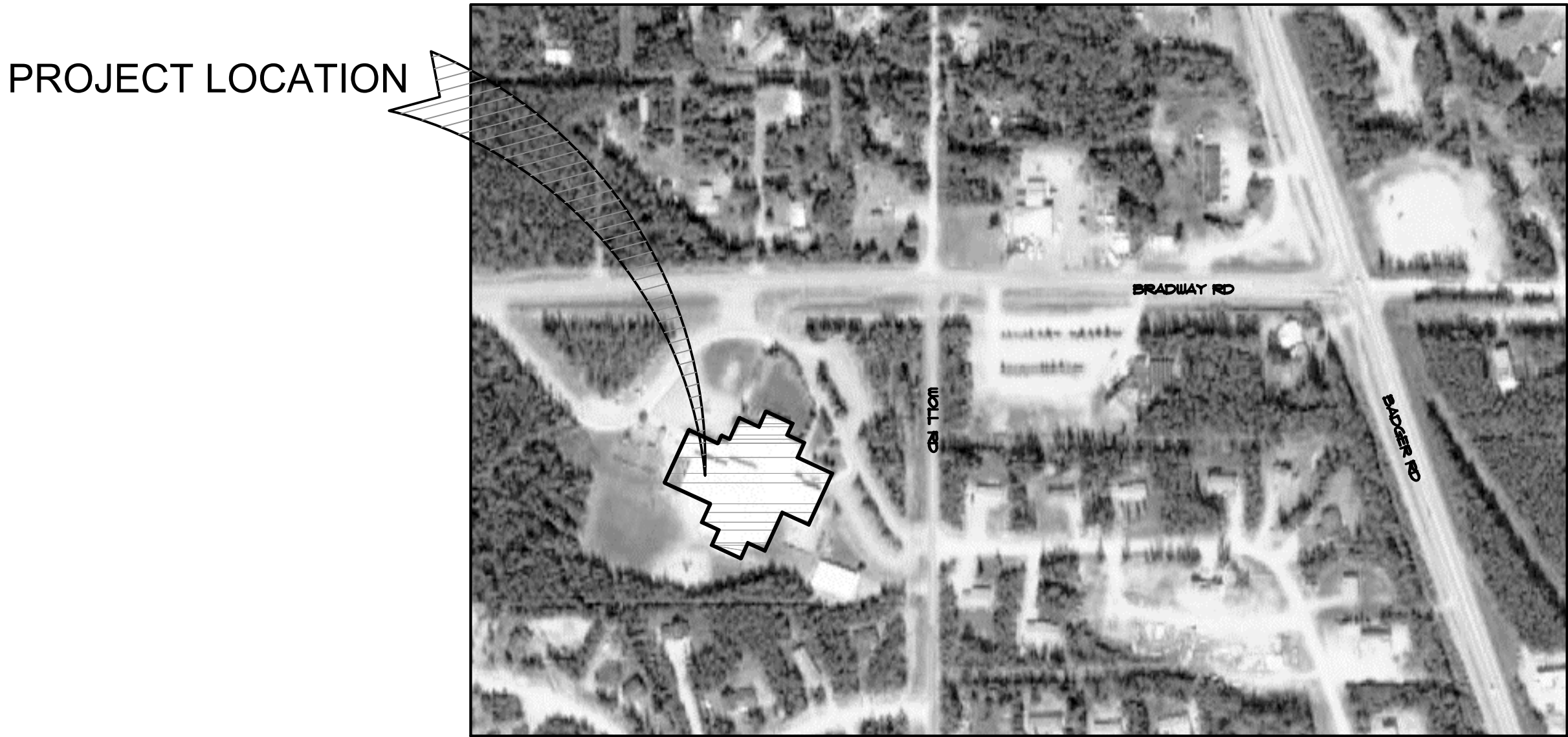
EVALUATION OF BIDS

Bids submitted in accordance with the terms specified herein shall be evaluated based on the price offered.

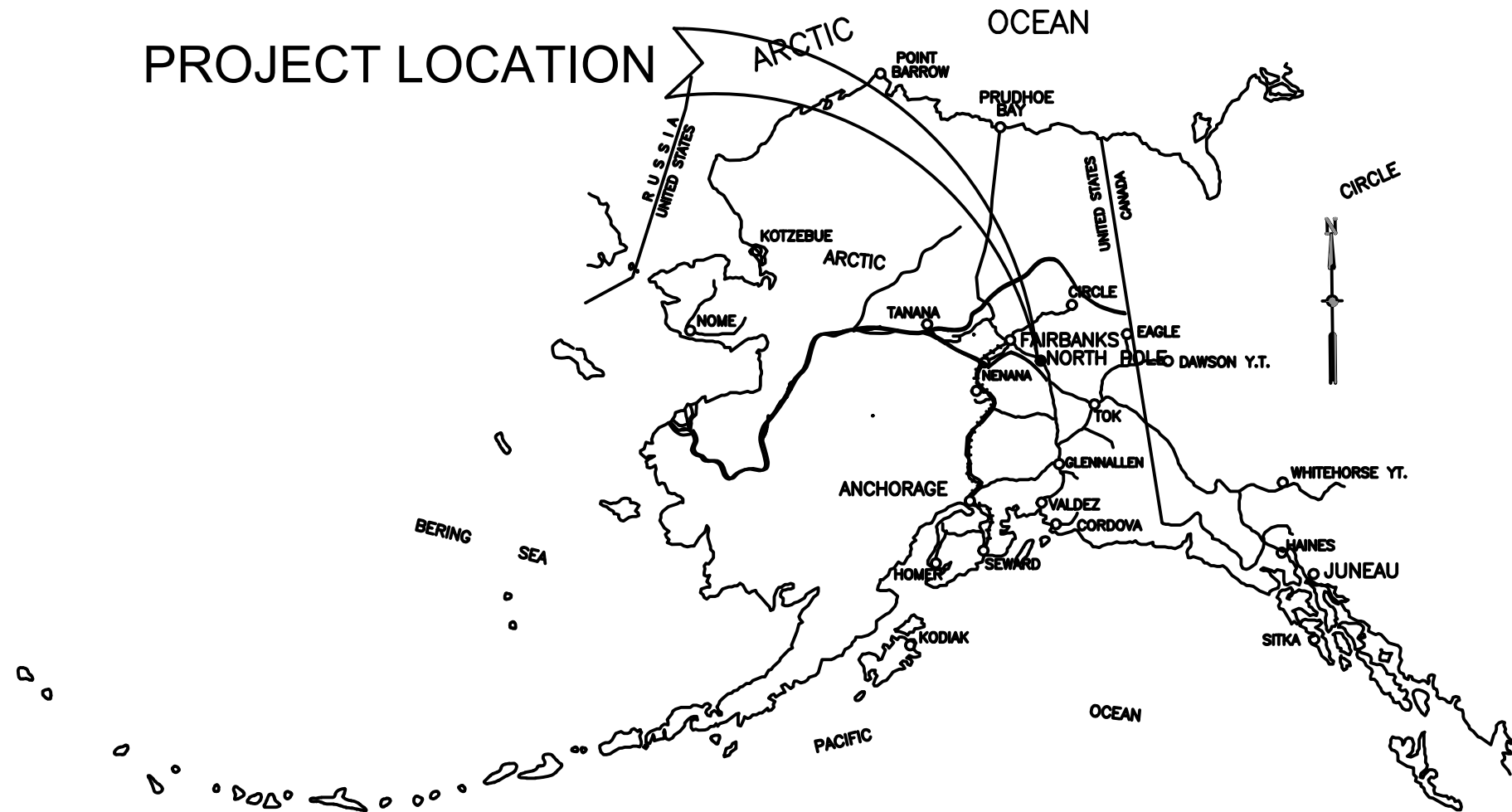
MIDNIGHT SUN ELEMENTARY SCHOOL

FIRE PUMP TRANSFER SWITCH REPLACEMENT

NORTH POLE, ALASKA



AREA MAP - NORTH POLE



VICINITY MAP - ALASKA

DRAWING INDEX

GENERAL

T1 LOCATION MAP,
DRAWING INDEX

ELECTRICAL

E100 LEGEND, DEMO WORK
AND NEW WORK

E200 PARTIAL POWER RISER
DIAGRAM AND DETAIL

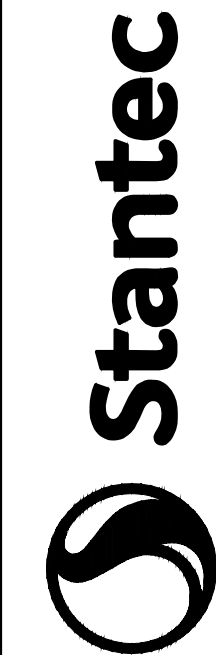
E300 SPECIFICATIONS

OWNER:

FAIRBANKS NORTH STAR BOROUGH SCHOOL DISTRICT
520 FIFTH AVENUE
FAIRBANKS, ALASKA 99701

CODES USED:

NFPA 70 NATIONAL ELECTRICAL CODE
NFPA 20 STANDARD FOR INSTALLATION OF
STATIONARY PUMPS FOR FIRE
PROTECTION



Street Address
City, Province/State, Postal/Zip Code
Tel: +1.555.555.1234
www.stantec.com

Consultant

Revision
By
Appd
Issued

Permit/Seal



Client/Project
FAIRBANKS NORTH STAR
BOROUGH SCHOOL
DISTRICT
MIDNIGHT SUN SCHOOL
FIRE PUMP TRANSFER
SWITCH REPLACEMENT
NORTH POLE, ALASKA, 99705

Project No.: 2014295910

File Name: 2014295510_TITLE

Scale: AS SHOWN

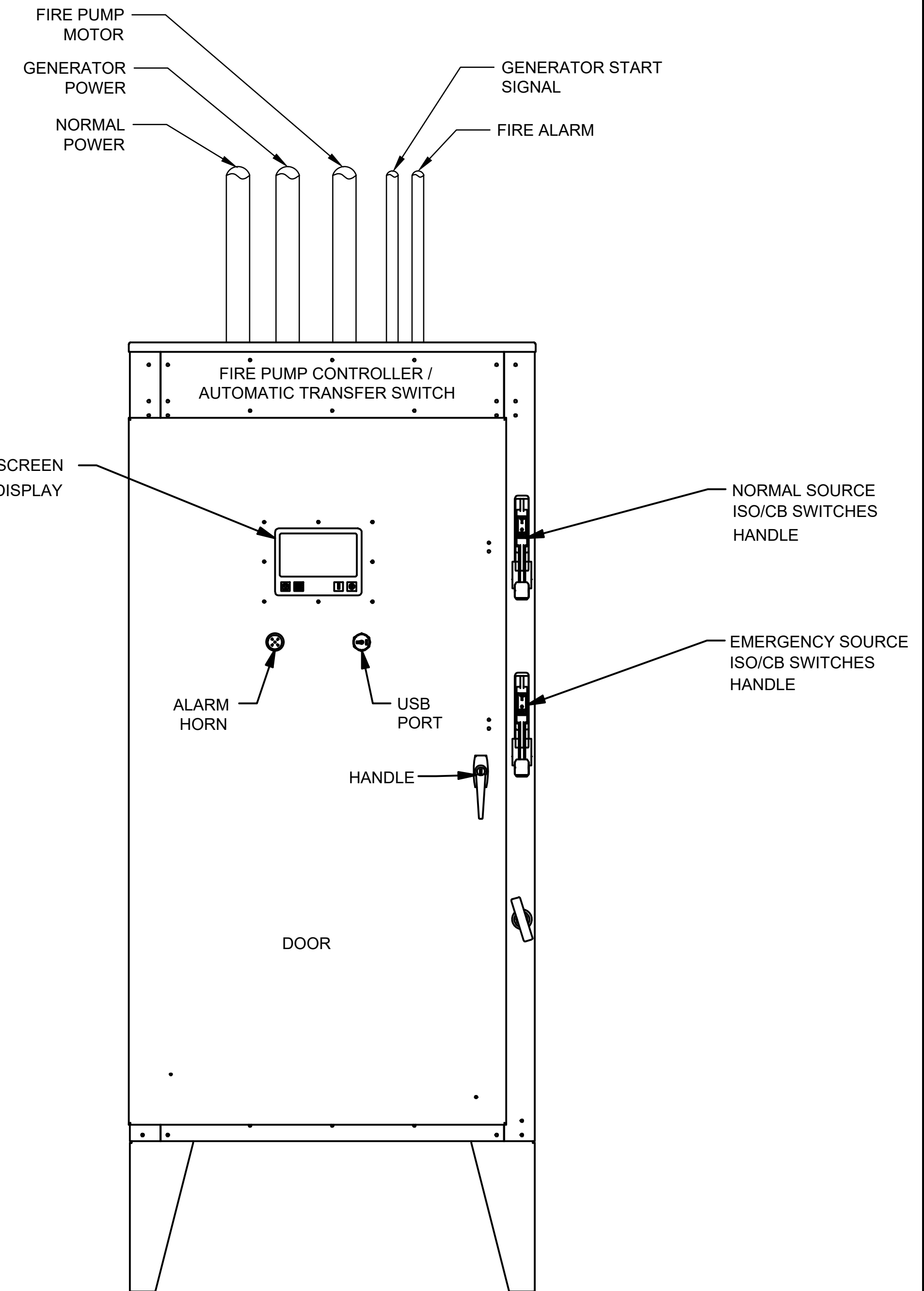
CLR CLR LPS 2023.07.20
Dwn. Dsgn. Chkd. YYYY.MM.DD

Title

TITLE SHEET

Revision: Sheet: 1 of 4
Drawing No.

T1



1

E200

FIRE PUMP CONTROLLER ELEVATION

SCALE: N/A

- [illegible]

Permit/Seal

STATE OF ALASKA
 49TH
 Corey L. Rogers
 COREY L. ROGERS
 EE-107702
 08/30/23
 REGISTERED PROFESSIONAL ENGINEER

Client/Project
FAIRBANKS NORTH STAR
BOROUGH SCHOOL
DISTRICT
MIDNIGHT SUN SCHOOL
FIRE PUMP TRANSFER
SWITCH REPLACEMENT
NORTH POLE, ALASKA, 99705

Project No.: 2014295910			
File Name: 2014295510_E200			
Scale: AS SHOWN			
CLR	CLR	LPS	2023.07.20
Dwn.	Dsgn.	Chkd.	YYYY.MM.DD

Title
PARTIAL POWER RISER
DIAGRAM AND DETAIL

Revision: Sheet: 3 of 4
Drawing No.

E200

\\s01\40509195\dwg\elec\elec\10_electrical\10_cad\10_drawing\2014295910.dwg
2023.08.30 12:30:04 PM

A

B

C

D

ELECTRICAL SPECIFICATIONS

1. GENERAL
- 1.1. ALL WORK SHALL CONFORM TO THE LATEST EDITION OF THE NATIONAL ELECTRICAL CODE (NEC) AND ALL STATE AND LOCAL CODES AND CODE AMENDMENTS.

1.2. OBTAIN ALL PERMITS AND PAY ALL FEES REQUIRED BY THIS WORK.

1.3. MAINTAIN RESPONSIBILITY FOR THE CONDITION OF ALL MATERIALS USED. IF LOST, STOLEN, OR DAMAGED, MATERIALS SHALL BE REPLACED AT NO EXTRA COST TO THE OWNER.

1.4. ALL WORK SHALL BE PERFORMED BY WORKMEN SKILLED IN AND REGULARLY EMPLOYED IN THE TRADE. INSTALL ALL PRODUCTS IN A NEAT AND WORKMANLIKE MANNER. PER MANUFACTURER'S INSTRUCTIONS, AND IN COMPLIANCE WITH NECA 1 "STANDARD PRACTICE FOR GOOD WORKMANSHIP IN ELECTRICAL CONTRACTING" AS A MINIMUM. COMPLY WITH NFPA 70E SAFETY RULES AS A MINIMUM.

1.5. PERFORM ALL CUTTING, DRILLING, AND PATCHING OF WALLS AND FLOORS NECESSARY FOR A COMPLETE INSTALLATION.

1.6. REMOVE ALL DEBRIS AND SURPLUS MATERIAL FOR THE PREMISES AS PROGRESS OF THE WORK DICTATES.

1.7. ALL ELECTRICAL EQUIPMENT SHALL BE LISTED BY A NATIONALLY RECOGNIZED TESTING LABORATORY (NRTL).
2. PRODUCTS AND SUBMITTALS
- 2.1. SUBMIT PRODUCT DATA, CERTIFICATES, AND SHOP DRAWINGS TO THE ENGINEER. PROVIDE SUBMITTALS FOR WIRING DEVICES, CONDUCTORS, EQUIPMENT, ALARM PANELS AND DEVICES.

2.2. ALL PRODUCTS SHALL BE NEW AND LISTED OR LABELED BY A NATIONALLY RECOGNIZED TESTING LABORATORY (NRTL) FOR THE INTENDED USE, UNLESS OTHERWISE INDICATED.

2.3. MATCH EXISTING WHERE A UNIFORM INSTALLATION EXISTS UNLESS OTHERWISE INDICATED OR APPROVED.

2.4. PROVIDE SIMILAR ITEMS FROM THE SAME MANUFACTURER THROUGHOUT THE PROJECT.
3. DEMOLITION
- 3.1. REMOVE, STORE, CLEAN, REINSTALL, RECONNECT, AND MAKE OPERATIONAL COMPONENTS INDICATED FOR NEW INSTALLATION.
4. RACEWAYS AND BOXES
- 4.1. CONDUIT TYPES SHALL BE:

4.1.1. INTERIOR EXPOSED BELOW 4'AFF: RMC OR IMC.

4.1.2. INTERIOR EXPOSED ABOVE 4'AFF: RMC, IMC, OR EMT.

4.1.3. INTERIOR CONCEALED: RMC, IMC, OR EMT.

4.2. CONNECTIONS TO EQUIPMENT REQUIRING FLEXIBILITY OR SUBJECT TO VIBRATION SHALL BE:

4.2.1. INTERIOR, DRY LOCATIONS: FMC OR LFMC.

4.2.2. INTERIOR, DAMP OR WET LOCATIONS: LFMC

4.3. MINIMUM CONDUIT SIZE SHALL BE 3/4".

4.4. CONDUIT FITTINGS SHALL BE GALVANIZED STEEL AND HAVE NYLON INSULATED THROATS.

4.5. CONDUIT FITTINGS FOR RMC AND IMC SHALL BE THREADED TYPE.

4.6. CONDUIT FITTINGS FOR EMT SHALL BE STEEL COMPRESSION TYPE.

4.7. PENETRATIONS THROUGH FIRE-RATED ASSEMBLIES SHALL BE SEALED TO MAINTAIN THE FIRE RATING.

4.8. CONDUITS SHALL BE CUT SQUARE AND ENDS REAMED TO REMOVE BURRS.

4.9. MAXIMUM CONDUIT BEND SHALL BE 90 DEGREES, WITH NOT MORE THAN THREE 90 DEGREE BENDS OR EQUIVALENT BETWEEN PULL POINTS.

4.10. JUNCTION AND DEVICE BOXES SHALL BE SUITABLE FOR USE AT THE INSTALLED LOCATION AND ARRANGED TO ACCEPT THE INTENDED DEVICE OR EQUIPMENT. JUNCTION AND DEVICE BOXES SHALL BE:

4.10.1. INTERIOR EXPOSED BELOW 5'AFF: GALVANIZED CAST IRON OR CAST ALUMINUM WITH THREADED CONDUIT HUBS.

4.10.2. INTERIOR EXPOSED ABOVE 5'AFF: GALVANIZED SHEET STEEL.

4.10.3. INTERIOR CONCEALED: GALVANIZED SHEET STEEL.

4.11. THE ENTIRE CONDUIT SYSTEM SHALL BE MECHANICALLY AND ELECTRICALLY CONTINUOUS FROM THE SOURCE TO ALL DEVICES AND GROUNDED IN ACCORDANCE WITH THE NEC.

4.12. INSTALL CONDUIT AND DEVICES CONCEALED AND FLUSH IN FINISHED AREAS. CONDUIT AND DEVICES MAY BE INSTALLED EXPOSED IN UNFINISHED AREAS AND MECHANICAL ROOMS, AND AS INDICATED ON THE DRAWINGS.
5. CONDUCTORS AND CABLES
- 5.1. CONDUCTORS SHALL BE COPPER, SOLID OR STRANDED FOR 12AWG AND SMALLER, STRANDED FOR 10AWG AND LARGER. INSULATION SHALL BE:

5.1.1. INTERIOR, HEATED: THHN-THWN OR XHHW.

5.1.2. INTERIOR, UNHEATED: XHHW.

5.1.3. EXTERIOR: XHHW.

5.2. MINIMUM CONDUCTOR SIZES SHALL BE 12AWG FOR POWER AND 18AWG FOR LOW-VOLTAGE AND CONTROLS. CIRCUIT CONDUCTORS SHALL BE INCREASED IN SIZE FOR VOLTAGE DROP BASED ON THE CIRCUIT LENGTH, 12AWG UP TO 100', 10AWG UP TO 200', 8AWG OVER 200'. INCREASE SIZE OF CONDUIT AS REQUIRED FOR LARGER CONDUCTOR SIZES.

5.3. PROVIDE A SEPARATE GREEN INSULATED EQUIPMENT GROUNDING CONDUCTOR IN ALL POWER AND CONTROL CIRCUITS. INCREASE SIZE OF GROUNDING CONDUCTOR PROPORTIONALLY AS REQUIRED WHERE POWER CONDUCTORS ARE OVERSIZED FOR VOLTAGE DROP.
6. COMBINATION FIRE PUMP - AUTOMATIC TRANSFER SWITCH
- 6.1. FIRE PUMP CONTROLLER WITH INTEGRAL AUTOMATIC TRANSFER SWITCH.

6.2. THE COMBINATION FIRE PUMP CONTROLLER SHALL BE UL LISTED AND FM APPROVED.

6.3. MAGNETIC CONTROLLER SIZED FOR ACROSS-THE-LINE STARTING.

6.4. EMERGENCY START WITH MECHANICALLY OPERATED START HANDLE THAT CLOSSES AND RETAINS THE MOTOR RUN CONTACTOR INDEPENDENT OF ELECTRIC OR PRESSURE ACTUATORS.

6.5. METHOD OF STOPPING: AUTOMATIC AND NONAUTOMATIC SHUTDOWN AFTER AUTOMATIC STARTING.

6.6. CAPACITY: RATED FOR FIRE-PUMP-DRIVER HORSEPOWER AND SHORT-CIRCUIT-CURRENT (WITHSTAND) RATING EQUAL TO OR

- GREATER THAN SHORT-CIRCUIT CURRENT AVAILABLE AT CONTROLLER LOCATION.
- 6.7. METHOD OF ISOLATION AND OVERCURRENT PROTECTION: INTERLOCKED ISOLATING SWITCH AND NONTHERMAL MCCB; WITH A COMMON, EXTERNALLY MOUNTED OPERATING HANDLE, AND PROVIDING LOCKED-ROTOR PROTECTION.

6.8. DOOR-MOUNTED OPERATOR INTERFACE AND CONTROLS:

6.8.1. MONITOR, DISPLAY, AND CONTROL THE DEVICES, ALARMS, FUNCTIONS, AND OPERATIONS LISTED IN NFPA 20 AS REQUIRED FOR DRIVERS AND CONTROLLER TYPES USED.

6.8.2. METHOD OF CONTROL AND INDICATION:

6.8.2.1. MICROPROCESSOR-BASED LOGIC CONTROLLER, WITH MULTILINE DIGITAL READOUT.

6.8.2.2. MEMBRANE KEYPAD.

6.8.2.3. LED ALARM AND STATUS INDICATING LIGHTS.

6.9. LOCAL ALARM AND STATUS INDICATIONS:

6.9.1. CONTROLLER POWER ON.

6.9.2. MOTOR RUNNING CONDITION.

6.9.3. LOSS-OF-LINE POWER.

6.9.4. LINE-POWER PHASE REVERSAL.

6.9.5. LINE-POWER SINGLE-PHASE CONDITION.

6.10. AUDIBLE ALARM, WITH SILENCE PUSH BUTTON.

6.11. NONAUTOMATIC START AND STOP PUSH BUTTONS OR SWITCHES.

6.12. OPERATOR INTERFACE COMMUNICATIONS PORTS: USB AND ETHERNET

6.13. AUTOMATIC TRANSFER SWITCH

6.13.1. COMPLIES WITH NFPA 20

6.13.2. INTEGRAL WITH CONTROLLER AS A LISTED COMBINATION FIRE-PUMP CONTROLLER AND POWER TRANSFER SWITCH.

6.13.3. AUTOMATICALLY TRANSFERS FIRE-PUMP CONTROLLER FROM NORMAL POWER SUPPLY TO ALTERNATE POWER SUPPLY IN EVENT OF POWER FAILURE.

6.13.4. ALLOWS MANUAL TRANSFER FROM ONE SOURCE TO THE OTHER.

6.13.5. ALTERNATE-SOURCE ISOLATING AND DISCONNECTING MEANS:

6.13.5.1. INTEGRAL MOLDED-CASE SWITCH, WITH AN EXTERNALLY MOUNTED OPERATING HANDLE.

6.13.5.2. MECHANICALLY INTERLOCKED ISOLATION SWITCH AND CIRCUIT BREAKER RATED AT A MINIMUM OF 115 PERCENT OF RATED MOTOR FULL-LOAD CURRENT; WITH AN EXTERNALLY MOUNTED OPERATING HANDLE; CIRCUIT BREAKER MUST BE PROVIDED WITH NONTHERMAL SENSING, INSTANTANEOUS-ONLY SHORT-CIRCUIT OVERCURRENT PROTECTION TO COMPLY WITH AVAILABLE FAULT CURRENTS.

6.13.6. LOCAL ALARM AND STATUS INDICATIONS:

6.13.6.1. NORMAL SOURCE AVAILABLE.

6.13.6.2. ALTERNATE SOURCE AVAILABLE.

6.13.6.3. IN NORMAL POSITION.

6.13.6.4. IN ALTERNATE POSITION.

6.13.6.5. ISOLATING MEANS OPEN.

6.13.6.6. AUDIBLE ALARM, WITH SILENCE PUSH BUTTON.

6.13.6.7. NONAUTOMATIC (MANUAL, NONELECTRIC) MEANS OF TRANSFER.

6.13.6.8. ENGINE TEST PUSH BUTTON.

6.13.6.9. START GENERATOR OUTPUT CONTACTS.

6.14. PROGRAMMING, SETUP, AND TEST FIRE PUMP CONTROLLER IN ACCORDANCE WITH FM GLOBAL PROPERTY LOSS PREVENTION DATA SHEET 3-7, FIRE PROTECTION PUMPS, INCLUDING AUTOMATIC STARTING AT A SET WATER PRESSURE AND MANUAL STOPPING.

6.15. TEST FIRE PUMP CONTROLLER IN ACCORDANCE WITH NFPA 20 AND MANUFACTURER'S STARTUP AND TESTING PROCEDURES.
7. FIRE ALARM
- 7.1. EXISTING FIRE ALARM SYSTEM IS A NON-ADDRESSABLE ZONED SYSTEM, EDWARDS / GENERAL SIGNAL 5721B.

7.2. ALL DEVICES ASSOCIATED WITH THE SPRINKLER SYSTEM ARE CURRENTLY CONNECTED TO ZONE 9 AND SHALL REMAIN IN PLACE.

7.3. CONNECT NEW FIRE PUMP CONTROLLER TO EXISTING ZONE 9.

7.4. TEST MODIFIED FIRE ALARM SYSTEM ZONE 9 IN ACCORDANCE WITH NFPA 72. SUBMIT ALL REQUIRED DOCUMENTATION TO THE AUTHORITY HAVING JURISDICTION (AHJ) AND THE OWNER.
8. IDENTIFICATION
- 8.1. COLOR CODE SECONDARY PHASE CONDUCTORS FOR FEEDERS AND BRANCH CIRCUITS. COLORING SHALL BE FACTORY APPLIED FOR SMALL CONDUCTORS. PHASE CONDUCTORS 8AWG AND LARGER AND NEUTRAL AND GROUND CONDUCTORS 4AWG AND LARGER MAY BE FIELD APPLIED USING COLORED PRESSURE-SENSITIVE PLASTIC TAPE. CONDUCTORS SHALL BE COLORED:

480/277-VOLT THREE PHASE

PHASE A: BROWN

PHASE B: ORANGE

PHASE C: YELLOW

NEUTRAL: GRAY

GROUND: GREEN

8.2. POWER CIRCUITS SHALL BE IDENTIFIED IN JUNCTION AND DEVICE BOXES, MANHOLES, AND PANELBOARDS WITH THE PANEL AND CIRCUIT NUMBER. ALARM CIRCUITS SHALL BE IDENTIFIED IN JUNCTION AND DEVICE BOXES, MANHOLES, EQUIPMENT RACKS, AND PANELS WITH THE CIRCUIT DESIGNATION. IDENTIFICATION SHALL BE BY:

8.2.1. INTERIOR: PRE-PRINTED WRAPAROUND ADHESIVE LABELS.

8.3. EQUIPMENT LABELS SHALL BE ENGRAVED PLASTIC LAMINATE, WHITE LETTERING ON A BLACK FIELD. TEXT SHALL BE 1/2" HIGH ON A 1-1/2" HIGH LABEL. LABELS WITH TWO LINES OF TEXT SHALL USE A 2" HIGH LABEL. EQUIPMENT LABELS SHALL BE PLACED ON SWITCHBOARDS, PANELBOARDS, MOTOR STARTERS, DISCONNECTS, CONTACTORS, AND SYSTEM PANELS AND CABINETS.

8.4. IN UNFINISHED AND CONCEALED AREAS, PAINT COVERS OF JUNCTION BOXES TO IDENTIFY USE:

8.4.1. FIRE ALARM: RED.

8.4.2. LOW-VOLTAGE CONTROLS: GREEN.

9. PROJECT COMPLETION / TESTING AND ACCEPTANCE
- 9.1. UPON PROJECT COMPLETION, CLEAN ALL ELECTRICAL EQUIPMENT AND FIXTURES AND REPLACE OR REPAIR ANY ITEMS SCRATCHED, DENTED, OR OTHERWISE DISFIGURED.

9.2. TEST ALL SYSTEMS TO ASSURE PROPER OPERATION. TEST MODIFIED PORTIONS OF EXISTING SYSTEMS UNLESS OTHERWISE DIRECTED.

9.3. NOTIFY OWNER OF TEST SCHEDULE AND PROVIDE WRITTEN TEST REPORTS. INCLUDE DEFICIENCIES IDENTIFIED AND ACTIONS TAKEN TO OBTAIN ACCEPTABLE RESULTS.

9.4. DURING FINAL INSPECTION, DEMONSTRATE SATISFACTORY OPERATION OF ENTIRE INSTALLATION. REPAIR OR REPLACE FAILED ITEMS AND REPAIR ALL CONSTRUCTION DAMAGE.

9.5. MAINTAIN RED-LINED AS-BUILT RECORD DRAWINGS AS PROJECT PROGRESSES AND DELIVER TO OWNER AFTER FINAL INSPECTION AND ACCEPTANCE.

Consultant

Permit/Seal



Client/Project
FAIRBANKS NORTH STAR
BOROUGH SCHOOL
DISTRICT
MIDNIGHT SUN SCHOOL
FIRE PUMP TRANSFER
SWITCH REPLACEMENT
NORTH POLE, ALASKA, 99705

Project No.: 2014295910

File Name: 2014295510_E300

Scale: AS SHOWN

CLR	CLR	LPS
Dwn.	Dsgn.	Chkd.
		2023.07.20
		YYYY.MM.DD

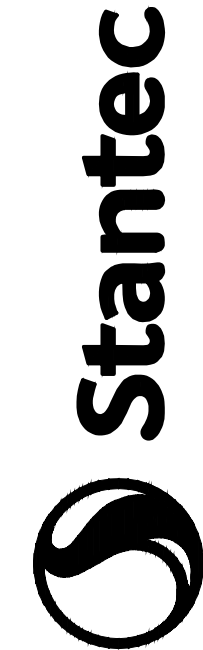
Title

SPECIFICATIONS

Revision: Sheet: 4 of 4

Drawing No.

E300



Stantec
Street Address
City, Province/State, Postal/Zip Code
Tel: +1.555.555.1234
www.stantec.com

The Consultant shall verify and be responsible for all dimensions. DO NOT scale the drawings. The Consultant shall verify and be responsible for all dimensions. DO NOT scale the drawings. The Consultant shall verify and be responsible for all dimensions. DO NOT scale the drawings.

FNSBSD – Contractor Key Checkout Procedure



Keys for school district facilities are available for check out by the contractor upon request to the school district facilities management department (FMD). The address from which to pick up the keys is 1300 Minnie Street Fairbanks Alaska 99701.

Requests for keys should initially be directed to the appropriate project manager. For example, the FNSB Public Works project manager. The contractor's key request will provide an employee's name in order to assign the keys to specific personnel.

The school district project manager will arrange to have the keys made available to the contractor at FMD. FMD will keep a record of key assignments.

The contractor shall provide written annual notification via email confirming the same employee is still assigned and holding the school district keys.

The contractors shall provide updates when the assigned keys are distributed for any reason to an employee other than the same employee who requested and received the original assignment.

The contractor's keys shall be returned to FMD when they are no longer needed by the contractor.

Keys damaged while assigned and held by the contractor during the contract execution and warranty period shall be returned to FMD.

Refer to page 2 of this procedure to notify and retribute the school district for lost keys.

FMD Email contacts: lockshop@k12northstar.org, fmd@k12northstar.org

FMD Phone: 907-452-4461



Fairbanks North Star Borough School District
Facilities Management Department
1300 Minnie Street Fairbanks Alaska 99701
907-452-4461 fmd@k12northstar.org

Contractor lost key school district restitution form

This form will be used to report lost school district keys. This form will accompany payment to the school district for lost keys. School District keys are required to be returned to FMD following the end of the contract warranty period. The contractor shall be allowed a 1 month time frame to return the keys following the end of the warranty period. If the keys are lost during the contract execution phase, the warranty period or any time afterwards this form shall be used to list the lost keys and provide payment. Please refer to the fee schedule in the field below for lost keys. Charges for lost keys paid in accordance with this form are final and no additional charges will be required by the school district for the keys listed.

Contractor: _____

Contractor supervisor: _____ Employee _____

Project: _____

Description	Charge per key	Qty	Key#/FOB#	Amount due
Interior door key (school specific) with key FOB	\$100.00			
Interior master key (District wide key)	\$200.00			
Exterior master key (District wide key)	\$300.00			
Totals				

To coordinate payment to the school district for the lost keys contact the school district accounts receivable department email: accountsreceivable@k12northstar.org, address 520 5th avenue Fairbanks Alaska 99701, phone 907-452-2000

Contractor supervisor

signature _____ Date _____

Email a copy of this form to the school district: accountsreceivable@k12northstar.org, intouch@k12northstar.org and the facilities management lock shop at: lockshop@k12northstar.org. The QR code on this page will link to school district accounts receivable for the processing of payment.

Reference: school district administrative regulation 741.

The school district lock shop address is:
1300 Minnie St Fairbanks AK 99701

Scan this QR code for quick Online payments.



MINIMUM RATES OF PAY For Laborers and Mechanics

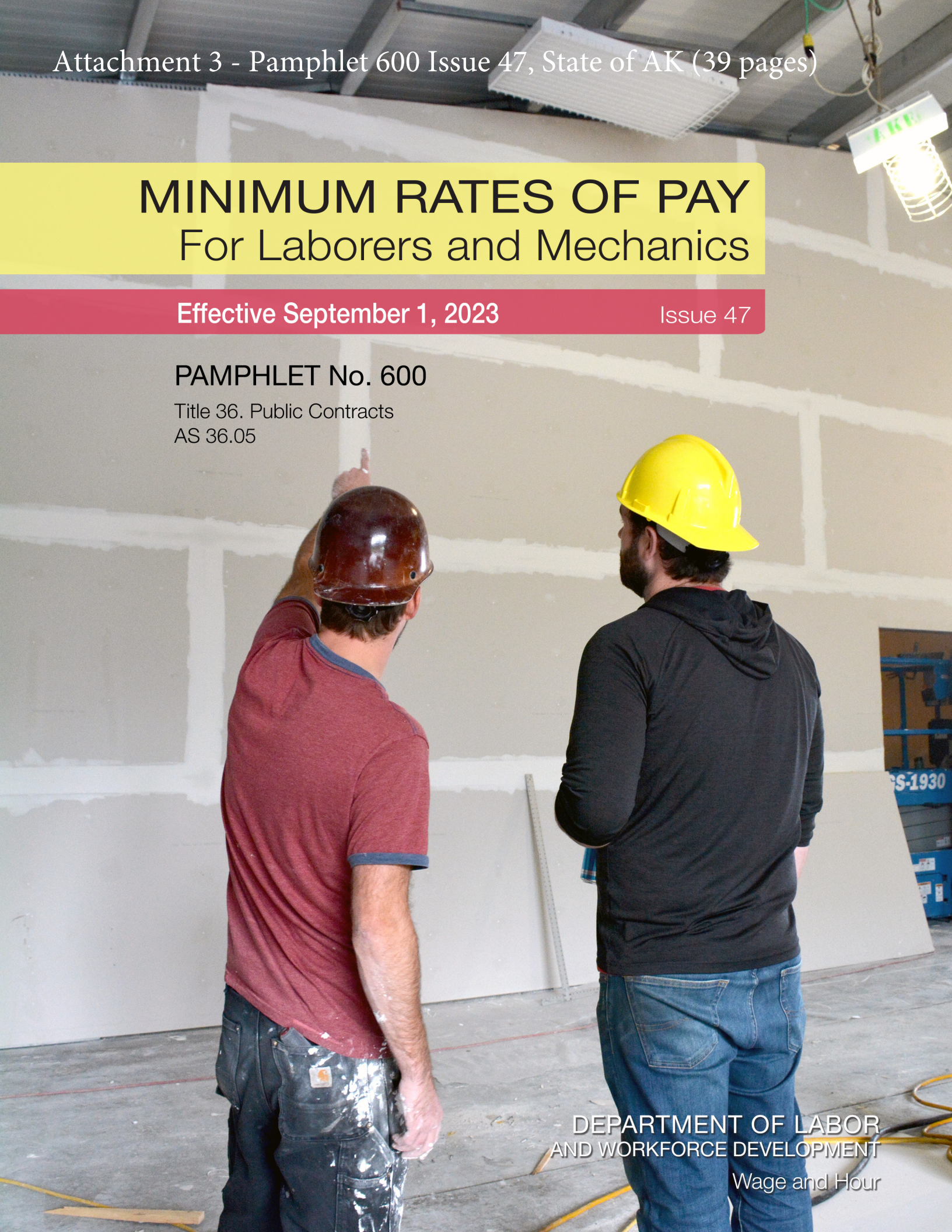
Effective September 1, 2023

Issue 47

PAMPHLET No. 600

Title 36. Public Contracts
AS 36.05

DEPARTMENT OF LABOR
AND WORKFORCE DEVELOPMENT
Wage and Hour



- This page intentionally left blank -



THE STATE
of **ALASKA**
GOVERNOR MIKE DUNLEAVY

Department of Labor and Workforce Development

Office of the Commissioner

Post Office Box 111149
Juneau, Alaska 99811
Main: 907.465.2700
fax: 907.465-2784

September 1, 2023

TO ALL CONTRACTING AGENCIES:

At the Alaska Department of Labor and Workforce Development our goal is putting Alaskans to work. This pamphlet is designed to help contractors awarded public construction contracts understand the most significant laws of the State of Alaska pertaining to prevailing wage.

This pamphlet identifies current prevailing wage rates for public construction contracts (any construction projects awarded for the State of Alaska or its political subdivisions, such as local governments and certain non-profit organizations). Because these rates may change in a subsequent determination, please be sure you are using the appropriate rates. The rates published in this edition become effective September 1, 2023.

The prevailing wage rates contained in this pamphlet are applicable to public construction projects with a final bid date of September 11, 2023, or later. As the law now provides, these rates will remain stable during the life of a contract or for 24 calendar months, whichever is shorter. **The 24-month period begins on the date the prime contract is awarded.** Upon expiration of the initial 24-month period, the latest wage rates issued by the department shall become effective for a subsequent 24-month period or until the original contract is completed, whichever occurs first. This process shall be repeated until the original contract is completed.

The term "original contract" means the signed contract that resulted from the original bid and any amendments, including changes of work scope, additions, extensions, change orders, and other instruments agreed to by the parties that have not been subject to subsequent open bid procedures.

If a higher federal rate is required due to partial federal funding or other federal participation, the higher rate must be paid.

For additional copies of this pamphlet go to: <http://labor.state.ak.us/lss/pamp600.htm>

For questions regarding prevailing wage or employment preference requirements, please contact the nearest Wage and Hour office. These offices are listed on Page x.

Sincerely,

A handwritten signature in blue ink that reads "Catherine Muñoz".

Catherine Muñoz
Acting Commissioner

- This page intentionally left blank -

Table of Contents

Excerpts from Alaska Law

Sec. 36.05.005. Applicability.....	iv
Sec. 36.05.010. Wage rates on public construction.	iv
Sec. 36.05.040. Filing schedule of employees, wages paid and other information	iv
Sec. 36.05.045. Notice of work and completion; withholding of payment	iv
Sec. 36.05.060. Penalty for violation of this chapter	v
Sec. 36.05.070. Wage rates in specifications and contracts for public works	v
Sec. 36.05.080. Failure to pay agreed wages.....	v
Sec. 36.05.090. Payment of wages from withheld payments and listing contractors who violate contracts	v
Sec. 36.05.900. Definition.. ..	vi

Excerpts from Alaska Administrative Code

8 AAC 30.051. Purpose	vi
8 AAC 30.052. Board and lodging; remote sites	vi
8 AAC 30.054. Per diem instead of board and lodging	vi
8 AAC 30.056. Alternative arrangement	vii
8 AAC 30.900. General definitions (selected excerpts).....	vii

Additional Information

Per Diem	vii
Laborer Classification Clarification.....	viii
Apprentice Rates.....	viii
Fringe Benefit Plans.....	viii
Special Prevailing Wage Rate Determination.....	ix
Alaska Employment Preference Information.....	ix
Labor Standards and Safety Notice Requests	x
Debarment List	x

Wage Rates	Pages 1-26
-------------------------	-------------------

Shipyard Rate Addendum.....	Pages 27
------------------------------------	-----------------

Note to Readers: The statutes and administrative regulations listed in this publication were taken from the official codes, as of the effective date of the publication. However, there may be errors or omissions that have not been identified and changes that occurred after the publication was printed. This publication is intended as an informational guide only and is not intended to serve as a precise statement of the statutes and regulations of the State of Alaska. To be certain of current laws and regulations, please refer to the official codes.

EXCERPTS FROM ALASKA LAW

Sec. 36.05.005. Applicability.

This chapter applies only to a public construction contract that exceeds \$25,000.

Sec. 36.05.010. Wage rates on public construction.

A contractor or subcontractor who performs work on a public construction contract in the state shall pay not less than the current prevailing rate of wages for work of a similar nature in the region in which the work is done. The current prevailing rate of wages is that contained in the latest determination of prevailing rate of wages issued by the Department of Labor and Workforce Development at least 10 days before the final date for submission of bids for the contract. The rate shall remain in effect for the life of the contract or for 24 calendar months, whichever is shorter. At the end of the initial 24-month period, if new wage determinations have been issued by the department, the latest wage determination shall become effective for the next 24-month period or until the contract is completed, whichever occurs first. This process shall be repeated until the contract is completed.

Sec. 36.05.040. Filing schedule of employees, wages paid, and other information.

All contractors or subcontractors who perform work on a public construction contract for the state or for a political subdivision of the state shall, before the Friday of every second week, file with the Department of Labor and Workforce Development a sworn affidavit for the previous reporting period, setting out in detail the number of persons employed, wages paid, job classification of each employee, hours worked each day and week, and other information on a form provided by the Department of Labor and Workforce Development.

Sec. 36.05.045. Notice of work and completion; withholding of payment.

- (a) Before commencing work on a public construction contract, the person entering into the contract with a contracting agency shall designate a primary contractor for purposes of this section. Before work commences, the primary contractor shall file a notice of work with the Department of Labor and Workforce Development. The notice of work must list work to be performed under the public construction contract by each contractor who will perform any portion of work on the contract and the contract price being paid to each contractor. The primary contractor shall pay all filing fees for each contractor performing work on the contract, including a filing fee based on the contract price being paid for work performed by the primary contractor's employees. The filing fee payable shall be the sum of all fees calculated for each contractor. The filing fee shall be one percent of each contractor's contract price. The total filing fee payable by the primary contractor under this subsection may not exceed \$5,000. In this subsection, "contractor" means an employer who is using employees to perform work on the public construction contract under the contract or a subcontract.
- (b) Upon completion of all work on the public construction contract, the primary contractor shall file with the Department of Labor and Workforce Development a notice of completion together with payment of any additional filing fees owed due to increased contract amounts. Within 30 days after the department's receipt of the primary contractor's notice of completion, the department shall inform the contracting agency of the amount, if any, to be withheld from the final payment.
- (c) A contracting agency
 - (1) may release final payment of a public construction contract to the extent that the agency has received verification from the Department of Labor and Workforce Development that
 - (A) the primary contractor has complied with (a) and (b) of this section;
 - (B) the Department of Labor and Workforce Development is not conducting an investigation under this title; and
 - (C) the Department of Labor and Workforce Development has not issued a notice of a violation of this chapter to the primary contractor or any other contractors working on the public construction contract; and

- (2) shall withhold from the final payment an amount sufficient to pay the department's estimate of what may be needed to compensate the employees of any contractors under investigation on this construction contract, and any unpaid filing fees.
- (d) The notice and filing fee required under (a) of this section may be filed after work has begun if
 - (1) The public construction contract is for work undertaken in immediate response to an emergency; and
 - (2) The notice and fees are filed not later than 14 days after the work has begun.
- (e) A false statement made on a notice required by this section is punishable under AS 11.56.210.

Sec. 36.05.060. Penalty for violation of this chapter.

A contractor who violates this chapter is guilty of a misdemeanor and upon conviction is punishable by a fine of not less than \$100 nor more than \$1,000, or by imprisonment for not less than 10 days nor more than 90 days, or by both. Each day a violation exists constitutes a separate offense.

Sec. 36.05.070. Wage rates in specifications and contracts for public works.

- (a) The advertised specifications for a public construction contract that requires or involves the employment of mechanics, laborers, or field surveyors must contain a provision stating the minimum wages to be paid various classes of laborers, mechanics, or field surveyors and that the rate of wages shall be adjusted to the wage rate under AS 36.05.010.
- (b) Repealed by §17 ch 142 SLA 1972.
- (c) A public construction contract under (a) of this section must contain provisions that
 - (1) the contractor or subcontractors of the contractor shall pay all employees unconditionally and not less than once a week;
 - (2) wages may not be less than those stated in the advertised specifications, regardless of the contractual relationship between the contractor or subcontractors and laborers, mechanics, or field surveyors;
 - (3) the scale of wages to be paid shall be posted by the contractor in a prominent and easily accessible place at the site of the work;
 - (4) the state or a political subdivision shall withhold so much of the accrued payments as is necessary to pay to laborers, mechanics, or field surveyors employed by the contractor or subcontractors the difference between
 - (A) the rates of wages required by the contract to be paid laborers, mechanics, or field surveyors on the work; and
 - (B) the rates of wages in fact received by laborers, mechanics, or field surveyors.

Sec. 36.05.080. Failure to pay agreed wages.

Every contract within the scope of AS 36.05.070 shall contain a provision that if it is found that a laborer, mechanic, or field surveyor employed by the contractor or subcontractor has been or is being paid a rate of wages less than the rate of wages required by the contract to be paid, the state or its political subdivision may, by written notice to the contractor, terminate the contractor's right to proceed with the work or the part of the work for which there is a failure to pay the required wages and to prosecute the work to completion by contract or otherwise, and the contractor and the contractor's sureties are liable to the state or its political subdivision for excess costs for completing the work.

Sec. 36.05.090. Payment of wages from withheld payments and listing contractors who violate contracts.

- (a) The state disbursing officer in the case of a state public construction contract and the local fiscal officer in the case of a political subdivision public construction contract shall pay directly to laborers, mechanics, or field surveyors from accrued payments withheld under the terms of the contract the wages due laborers, mechanics, or field surveyors under AS 36.05.070.
- (b) The state disbursing officer or the local fiscal officer shall distribute to all departments of the state government and to all political subdivisions of the state a list giving the names of persons who have disregarded their obligations to employees. A person appearing on this list and a firm, corporation, partnership, or association in which the person has an interest may not work as a contractor or

subcontractor on a public construction contract for the state or a political subdivision of the state until three years after the date of publication of the list. If the accrued payments withheld under the contract are insufficient to reimburse all the laborers, mechanics, or field surveyors with respect to whom there has been a failure to pay the wages required under AS 36.05.070, the laborers, mechanics, or field surveyors have the right of action or intervention or both against the contractor and the contractor's sureties conferred by law upon persons furnishing labor or materials, and in the proceedings it is not a defense that the laborers, mechanics, or field surveyors accepted or agreed to accept less than the required rate of wages or voluntarily made refunds.

Sec. 36.05.900. Definition.

In this chapter, "contracting agency" means the state or a political subdivision of the state that has entered into a public construction contract with a contractor.

EXCERPTS FROM ALASKA ADMINISTRATIVE CODE

*****Notice:** Regulations relating to board and lodging and per diem went into effect on November 25, 2018. The new regulations are excerpted here***

8 AAC 30.051. Purpose. The purpose of 8 AAC 30.052 – 8 AAC 30.056 is to ensure that wages paid to laborers, mechanics, and field surveyors do not fall below the prevailing rate of pay.

8 AAC 30.052. Board and lodging; remote sites. (a) A contractor on a public construction project located 65 or more road miles from the international airport closest to the project area in either Fairbanks, Juneau, or Anchorage, or that is inaccessible by road in a two-wheel drive vehicle, shall provide adequate board and lodging to each laborer, mechanic, or field surveyor while the person is employed on the project. If commercial lodging facilities are not available, the contractor shall provide temporary lodging facilities. Lodging facilities must comply with all applicable state and federal laws. For a highway project, the location of the project is measured from the midpoint of the project.

(b) A contractor is not required to provide board and lodging:

(1) to a laborer, mechanic, or field surveyor who is a domiciled resident of the project area; or

(2) on a laborer, mechanic, or field surveyor's scheduled days off, when the person can reasonably travel between the project and the person's permanent residence; for the purposes of this paragraph, "scheduled day off" means a day in which a person does not perform work on-site, is not required to remain at or near the job location for the benefit of the contractor, and is informed of the day off at least seven days before the day off.

(c) Upon a contractor's written request, the commissioner may waive the requirements of (a) of this section where:

(1) the project is inaccessible by road in a two-wheel drive vehicle, but the laborer, mechanic, or field surveyor can reasonably travel between the project and the person's permanent residence within one hour; or

(2) a laborer, mechanic, or field surveyor is not a domiciled resident of the project area, but has established permanent residence, with the intent to remain indefinitely, within 65 road miles of the project, or for a highway project, the mid-point of the project.

8 AAC 30.054. Per diem instead of board and lodging. (a) A contractor may pay a laborer, mechanic, or field surveyor per diem instead of providing board and lodging, when the following conditions are met:

(1) the department determines that per diem instead of board and lodging is an established practice for the work classification; the department shall publish and periodically revise its determinations in the pamphlet *Laborers and Mechanics Minimum Rates of Pay*;

(2) the contractor pays each laborer, mechanic, or field surveyor the appropriate per diem rate as published and periodically revised in the pamphlet *Laborers and Mechanics Minimum Rates of Pay*; and

(3) the contractor pays the per diem to each laborer, mechanic, or field surveyor on the same day that wages are paid.

(b) A contractor may not pay per diem instead of board and lodging on a highway project located

- (1) west of Livengood on the Elliot Highway, AK-2;
- (2) on the Dalton Highway, AK-11;
- (3) north of milepost 20 on the Taylor Highway, AK-5;
- (4) east of Chicken on the Top of the World Highway; or
- (5) south of Tetlin Junction to the Alaska-Canada border on the Alaska Highway, AK-2.

8 AAC 30.056. Alternative arrangement. Upon a contractor's written request, the commissioner may approve an alternative board and lodging or per diem arrangement, provided

- (1) the arrangement does not reduce the laborer, mechanic, or field surveyor's wages below the prevailing wage rate; and
- (2) the laborer, mechanic, or field surveyor voluntarily enters into and signs the written arrangement; a labor organization representing laborers, mechanics, or field surveyors may enter into the written agreement on their behalf.

8 AAC 30.900. General definitions (selected excerpts only):

In this chapter and in AS 36

(22) "domiciled resident" means a person living within 65 road miles of a public construction project, or in the case of a highway project, the mid-point of the project, for at least 12 consecutive months prior to the award of the public construction project;

(23) "employed on the project" means the time period from the date the laborer, mechanic, or field surveyor first reports on-site to the project through the final date the person reports on-site to the project.

ADDITIONAL INFORMATION

PER DIEM

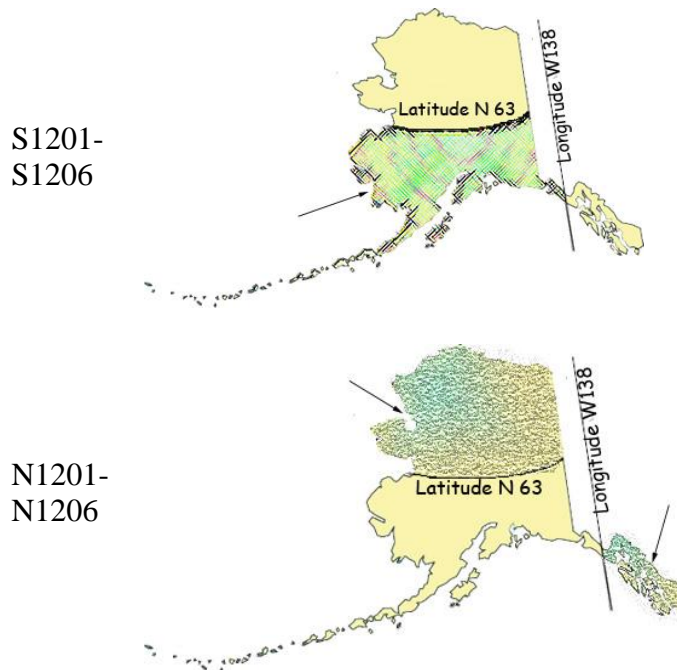
Notice: New regulations relating to board and lodging and per diem went into effect on November 25, 2018. The regulations provide a comprehensive set of requirements for the provision of board and lodging or per diem for workers on remote projects. Please refer to Alaska Administrative Code 8 AAC Chapter 30 and read the chapter carefully.

The Alaska Department of Labor and Workforce Development has determined that per diem is an established work practice for certain work classifications. These classifications are indicated throughout the Pamphlet by an asterisk (*) under the classification title. If all of the conditions of 8 AAC 30.054 are met, an employer may pay workers in these classifications per diem instead of providing board and lodging on a remote project.

Per Diem Rate: As of May 1st, 2019, the minimum per diem rate is \$100.00 per day, or part thereof, the worker is employed on the project. In the event that a contractor provides lodging facilities, but no meals, the department will accept a payment of \$48 per day for meals to meet the per diem requirements.

LABORER CLASSIFICATION CLARIFICATION

The laborer rates categorized in class code S1201-S1206 apply in one area of Alaska; the area that is south of N63 latitude and west of W138 Longitude. The laborer rates categorized in class code N1201-N1206 apply in two areas of Alaska; the Alaska areas north of N63 latitude and east of W138 longitude. The following graphic representations should assist with clarifying the applicable wage rate categories:



APPRENTICE RATES

Apprentice rates at less than the minimum prevailing rates may be paid to apprentices according to an apprentice program which has been registered and approved by the Commissioner of the Alaska Department of Labor and Workforce Development in writing or according to a bona fide apprenticeship program registered with the U.S. Department of Labor, Office of Apprenticeship Training. **Any employee listed on a payroll at an apprentice wage rate who is not registered as above shall be paid the journeyman prevailing minimum wage in that work classification.** Wage rates are based on prevailing crew makeup practices in Alaska and apply to work performed regardless of either the quality of the work performed by the employee or the titles or classifications which may be assigned to individual employees.

FRINGE BENEFIT PLANS

Contractors/subcontractors may compensate fringe benefits to their employees in any one of three methods. The fringe benefits may be paid into a union trust fund, into an approved benefit plan, or paid directly on the paycheck as gross wages.

Where fringe benefits are paid into approved plans, funds, or programs including union trust funds, the payments must be contributed at least monthly. If contractors submit their own payroll forms and are paying fringe benefits into approved plans, funds, or programs, the employer's certification must include, in addition to those requirements of 8 AAC 30.020(c), a statement that fringe benefit payments have been or will be paid at least monthly. Contractors who pay fringe benefits to a plan must ensure the plan is one approved by the Internal Revenue Service and that the plan meets the requirements of 8 AAC 30.025 (eff. 3/2/08) in order for payments to be credited toward the prevailing wage obligation.

SPECIAL PREVAILING WAGE RATE DETERMINATION

Special prevailing wage rate determinations may be requested for special projects or a special worker classification if the work to be performed does not conform to traditional public construction for which a prevailing wage rate has been established under 8 AAC 30.050(a) of this section. Requests for special wage rate determinations must be in writing and filed with the Commissioner at least 30 days before the award of the contract. An applicant for a special wage rate determination shall have the responsibility to support the necessity for the special rate. An application for a special wage rate determination filed under this section must contain:

- (1) a specification of the contract or project on which the special rates will apply and a description of the work to be performed;
- (2) a brief narrative explaining why special wage rates are necessary;
- (3) the job class or classes involved;
- (4) the special wage rates the applicant is requesting, including survey or other relevant wage data to support the requested rates;
- (5) the approximate number of employees who would be affected; and
- (6) any other information which might be helpful in determining if special wage rates are appropriate.

Requests made pursuant to the above should be addressed to:

Director
Alaska Department of Labor and Workforce Development
Labor Standards and Safety Division
Wage and Hour
P.O. Box 111149
Juneau, AK 99811-1149
-or-
Email: statewide.wagehour@alaska.gov

EMPLOYMENT PREFERENCE INFORMATION

In October 2019, the Alaska Attorney General issued a formal opinion stating that the Alaska Statutes 36.10.150 of the State's 90% Employment Preference law, also known as the Alaska Resident Hire law, violates both the U.S. and Alaska Constitutions. As a result, the state has stopped all enforcement activity.

A copy of the Attorney General opinion is found here:

http://law.alaska.gov/pdf/opinions/opinions_2019/19-005_AK-hire.pdf

Alaska Department of Labor and Workforce Development
Labor Standards and Safety Division
Wage and Hour
Web site: <http://labor.state.ak.us/lss/pamp600.htm>

Anchorage

1251 Muldoon Road, Suite 113
Anchorage, Alaska 99504-2098
Phone: (907) 269-4900

Email:
statewide.wagehour@alaska.gov

Juneau

PO Box 111149
Juneau, Alaska 99811
Phone: (907) 465-4842

Email:
statewide.wagehour@alaska.gov

Fairbanks

Regional State Office Building
675 7th Ave., Station J-1
Fairbanks, Alaska 99701-4593
Phone: (907) 451-2886

Email:
statewide.wagehour@alaska.gov

LABOR STANDARDS AND SAFETY NOTICE REQUESTS

If you would like to receive Wage and Hour or Mechanical Inspection **regulation notices** or **publications information**, they are available via electronic mail, by signing up in the GovDelivery System, <https://public.govdelivery.com/accounts/AKDOL/subscriber/new> and selecting topics *LSS – Wage and Hour – Forms and Publications*, *LSS – Mechanical Inspection Regulations*, or *LSS – Wage and Hour Regulations*.

Publications are also available online at <http://labor.alaska.gov/lss/home.htm>

DEBARMENT LIST

AS 36.05.090(b) states that “the state disbursing officer or the local fiscal officer shall distribute to all departments of the state government and to all political subdivisions of the state a list giving the names of persons who have disregarded their obligations to employees.”

A person appearing on the following debarment list and a firm, corporation, partnership, or association in which the person has an interest may not work as a contractor or subcontractor on a public construction contract for the state or a political subdivision of the state for three years from the date of debarment.

Company Name

Debarment Expires

No companies are currently debarred.

Laborers' & Mechanics' Minimum Rates of Pay

Class Code	Classification of Laborers & Mechanics	BHR	H&W	PEN	TRN	Other Benefits	THR
------------	--	-----	-----	-----	-----	----------------	-----

Boilermakers

*See per diem note on last page

A0101	Boilermaker (journeyman)	48.15	8.57	18.40	2.15	VAC 4.25 SAF 0.34	81.86
--------------	--------------------------	-------	------	-------	------	----------------------	-------

Bricklayers & Blocklayers

*See per diem note on last page

A0201	Blocklayer	42.01	9.00	10.20	0.62	L&M 0.20	62.03
--------------	------------	-------	------	-------	------	----------	-------

Bricklayer
Marble or Stone Mason
Refractory Worker (Firebrick, Plastic, Castable, and Guniting Refractory Applications)
Terrazzo Worker
Tile Setter

A0202	Tuck Pointer Caulker	42.01	9.00	10.20	0.62	L&M 0.20	62.03
--------------	----------------------	-------	------	-------	------	----------	-------

Cleaner (PCC)

A0203	Marble & Tile Finisher	35.84	9.00	10.20	0.62	L&M 0.20	55.86
--------------	------------------------	-------	------	-------	------	----------	-------

Terrazzo Finisher

A0204	Torginal Applicator	35.84	9.00	10.20	0.62	L&M 0.20	55.86
--------------	---------------------	-------	------	-------	------	----------	-------

Carpenters, Region I (North of 63 latitude)

*See per diem note on last page

N0301	Carpenter (journeyman)	44.39	10.35	15.82	1.75	L&M 0.20 SAF 0.20	72.71
--------------	------------------------	-------	-------	-------	------	----------------------	-------

Lather/Drywall/Acoustical

Carpenters, Region II (South of N63 latitude)

*See per diem note on last page

S0301	Carpenter (journeyman)	44.39	10.35	16.36	1.75	L&M 0.20 SAF 0.20	73.25
--------------	------------------------	-------	-------	-------	------	----------------------	-------

Lather/Drywall/Acoustical

Cement Masons

*See per diem note on last page

Wage benefits key: BHR=basic hourly rate; H&W=health and welfare; IAF=industry advancement fund; LEG=legal fund; L&M=labor/management fund; PEN=pension fund; SAF=safety; SUI=supplemental unemployment insurance; S&L=SUI & LEG combined; TRN=training; THR=total hourly rate; VAC=vacation

Class Code	Classification of Laborers & Mechanics	BHR	H&W	PEN	TRN	Other Benefits	THR
------------	--	-----	-----	-----	-----	----------------	-----

Cement Masons

*See per diem note on last page

						L&M	
A0401	Group I, including:	44.43	8.80	11.80	1.53	0.10	66.66
	Application of Sealing Compound						
	Application of Underlayment						
	Building, General						
	Cement Finisher						
	Cement Mason (journeyman)						
	Concrete						
	Concrete Paving						
	Concrete Polishing						
	Concrete Repair						
	Curb & Gutter, Sidewalk						
	Curing of All Concrete						
	General Concrete Pour Tender						
	Grouting & Caulking of Tilt-Up Panels						
	Grouting of All Plates						
	Patching Concrete						
	Screed Pin Setter						
	Screeder or Rodder						
	Spackling/Skim Coating						
A0402	Group II, including:	44.43	8.80	11.80	1.53	0.10	66.66
	Form Setter						
A0403	Group III, including:	44.43	8.80	11.80	1.53	0.10	66.66
	Concrete Saw Cutter Operator (All Control Joints and Self-powered)						
	Curb & Gutter Machine						
	Floor Grinder						
	Pneumatic Power Tools						
	Power Chipping & Bushing						
	Sand Blasting Architectural Finish						
	Screed & Rodding Machine Operator						
	Troweling Machine Operator (all concrete surfaces)						
A0404	Group IV, including:	44.43	8.80	11.80	1.53	0.10	66.66
	Acoustical or Imitation Acoustical Finish						
	Application of All Composition Mastic						
	Application of All Epoxy Material						
	Application of All Plastic Material						
	Finish Colored Concrete						
	Gunite Nozzleman						
	Hand Powered Grinder						

Wage benefits key: BHR=basic hourly rate; H&W=health and welfare; IAF=industry advancement fund; LEG=legal fund; L&M=labor/management fund; PEN=pension fund; SAF=safety; SUI=supplemental unemployment insurance; S&L=SUI & LEG combined; TRN=training; THR=total hourly rate; VAC=vacation

Class Code	Classification of Laborers & Mechanics	BHR	H&W	PEN	TRN	Other Benefits	THR
------------	--	-----	-----	-----	-----	----------------	-----

Cement Masons

*See per diem note on last page

A0404	Group IV, including:	44.43	8.80	11.80	1.53	L&M 0.10	66.66
--------------	----------------------	-------	------	-------	------	------------------------	-------

Preparing, scratching and browsing of all ceilings and walls, finished with terrazo or tile
Tunnel Worker

A0405	Group V, including:	44.43	8.80	11.80	1.53	L&M 0.10	66.66
--------------	---------------------	-------	------	-------	------	------------------------	-------

Casting and finishing
EIFS Systems
Finishing of all interior and exterior plastering
Fireproofing (Pryocrete, Cafco, Albi-Clad, sprayed fiberglass)
Gypsum, Portland Cement
Kindred material and products
Operation and control of all types of plastering machines, including power tools and floats, used by the industry
Overcoating and maintenance of interior/exterior plaster surfaces
Plasterer
Veneer plastering process (Rapid Plaster, U.S.G. "Imperial Systems", and Pabcoat Systems")
Venetian plaster and color-integrated Italian/Middle-Eastern line plaster

Culinary Workers

A0501	Baker/Cook	29.95	7.53	8.83		LEG	46.31
--------------	------------	-------	------	------	--	------------	-------

A0503	General Helper	25.92	7.53	8.83		LEG	42.28
--------------	----------------	-------	------	------	--	------------	-------

Housekeeper
Janitor
Kitchen Helper

A0504	Head Cook	29.95	7.53	8.83		LEG	46.31
--------------	-----------	-------	------	------	--	------------	-------

A0505	Head Housekeeper	26.20	7.53	8.83		LEG	42.56
--------------	------------------	-------	------	------	--	------------	-------

Head Kitchen Help

Dredgemen

*See per diem note on last page

A0601	Assistant Engineer	46.91	11.40	14.75	1.00	L&M 0.10 0.05	74.21
--------------	--------------------	-------	-------	-------	------	-----------------------------	-------

Craneman

Wage benefits key: BHR=basic hourly rate; H&W=health and welfare; IAF=industry advancement fund; LEG=legal fund; L&M=labor/management fund; PEN=pension fund; SAF=safety; SUI=supplemental unemployment insurance; S&L=SUI & LEG combined; TRN=training; THR=total hourly rate; VAC=vacation

Class Code	Classification of Laborers & Mechanics	BHR	H&W	PEN	TRN	Other Benefits	THR
Dredgemen							
*See per diem note on last page							
A0601	Assistant Engineer	46.91	11.40	14.75	1.00	L&M 0.10	0.05 74.21
	Electrical Generator Operator (primary pump/power barge/dredge)						
	Engineer						
	Welder						
A0602	Assistant Mate (deckhand)	45.65	11.40	14.75	1.00	L&M 0.10	0.05 72.95
A0603	Fireman	46.13	11.40	14.75	1.00	L&M 0.10	0.05 73.43
A0605	Leverman Clamshell	49.64	11.40	14.75	1.00	L&M 0.10	0.05 76.94
A0606	Leverman Hydraulic	47.74	11.40	14.75	1.00	L&M 0.10	0.05 75.04
A0607	Mate & Boatman	46.91	11.40	14.75	1.00	L&M 0.10	0.05 74.21
A0608	Oiler (dredge)	46.13	11.40	14.75	1.00	L&M 0.10	0.05 73.43
Electricians							
*See per diem note on last page							
A0701	Inside Cable Splicer	46.44	14.40	14.22	0.95	L&M 0.25	LEG 0.15 76.41
A0702	Inside Journeyman Wireman, including:	46.44	14.40	14.22	0.95	L&M 0.25	LEG 0.15 76.41
	Technicians (including use of drones in electrical construction)						
A0703	Power Cable Splicer	65.19	14.40	19.15	0.95	L&M 0.25	LEG 0.15 100.09
A0704	Tele Com Cable Splicer	52.53	14.40	17.98	0.95	L&M 0.25	LEG 0.15 86.26
A0705	Power Journeyman Lineman, including:	63.44	14.40	19.09	0.95	L&M 0.25	LEG 0.15 98.28
	Power Equipment Operator						
	Technician (including use of drones in electrical construction)						
A0706	Tele Com Journeyman Lineman, including:	50.78	14.40	17.92	0.95	L&M 0.25	LEG 0.15 84.45
	Technician (including use of drones in telecommunications construction)						
	Tele Com Equipment Operator						

Wage benefits key: BHR=basic hourly rate; H&W=health and welfare; IAF=industry advancement fund; LEG=legal fund; L&M=labor/management fund; PEN=pension fund; SAF=safety; SUI=supplemental unemployment insurance; S&L=SUI & LEG combined; TRN=training; THR=total hourly rate; VAC=vacation

Class Code	Classification of Laborers & Mechanics	BHR	H&W	PEN	TRN	Other Benefits	THR
Electricians							
*See per diem note on last page							
A0707	Straight Line Installer - Repairman	50.78	14.40	17.92	0.95	L&M 0.25 LEG 0.15	84.45
A0708	Powderman	61.44	14.40	19.03	0.95	L&M 0.25 LEG 0.15	96.22
A0710	Material Handler	28.07	14.02	5.84	0.15	L&M 0.15 LEG 0.15	48.38
A0712	Tree Trimmer Groundman	31.78	14.40	14.30	0.15	L&M 0.15 LEG 0.15	60.93
A0713	Journeyman Tree Trimmer	40.71	14.40	14.57	0.15	L&M 0.15 LEG 0.15	70.13
A0714	Vegetation Control Sprayer	44.26	14.40	14.68	0.15	L&M 0.15 LEG 0.15	73.79
A0715	Inside Journeyman Communications CO/PBX	46.44	14.40	14.22	0.95	L&M 0.25 LEG 0.15	76.41
Elevator Workers							
*See per diem note on last page							
A0802	Elevator Constructor	46.08	16.07	20.56	0.70	L&M 1.00 VAC 5.11	89.52
A0803	Elevator Constructor Mechanic	65.83	16.07	20.56	0.70	L&M 1.00 VAC 7.30	111.46
Heat & Frost Insulators/Asbestos Workers							
*See per diem note on last page							
A0902	Asbestos Abatement-Mechanical Systems	41.35	9.24	11.12	1.50	IAF 0.14 LML 0.05	63.40
A0903	Asbestos Abatement/General Demolition All Systems	41.35	9.24	11.12	1.50	IAF 0.14 LML 0.05	63.40
A0904	Insulator, Group II	41.35	9.24	11.12	1.50	IAF 0.14 LML 0.05	63.40
A0905	Fire Stop	41.35	9.24	11.12	1.50	IAF 0.14 LML 0.05	63.40
Ironworkers							
*See per diem note on last page							
A1101	Ironworkers, including:	42.99	10.16	26.45	0.77	L&M 0.20 IAF 0.24	80.81

Wage benefits key: BHR=basic hourly rate; H&W=health and welfare; IAF=industry advancement fund; LEG=legal fund; L&M=labor/management fund; PEN=pension fund; SAF=safety; SUI=supplemental unemployment insurance; S&L=SUI & LEG combined; TRN=training; THR=total hourly rate; VAC=vacation

Class Code	Classification of Laborers & Mechanics	BHR	H&W	PEN	TRN	Other	Benefits	THR
---------------	--	-----	-----	-----	-----	-------	----------	-----

IronWorkers

*See per diem note on last page

						L&M	IAF	
A1101	Ironworkers, including:	42.99	10.16	26.45	0.77	0.20	0.24	80.81
	Bender Operators							
	Bridge & Structural							
	Hangar Doors							
	Hollow Metal Doors							
	Industrial Doors							
	Machinery Mover							
	Ornamental							
	Reinforcing							
	Rigger							
	Sheeter							
	Signalman							
	Stage Rigger							
	Toxic Haz-Mat Work							
	Welder							

						L&M	IAF	
A1102	Helicopter	43.99	10.16	26.45	0.77	0.20	0.24	81.81
	Helicopter (used for rigging and setting)							
	Tower (energy producing windmill type towers to include nacelle and blades)							

						L&M	IAF	
A1103	Fence/Barrier Installer	39.49	10.16	26.45	0.77	0.20	0.24	77.31

						L&M	IAF	
A1104	Guard Rail Layout Man	40.23	10.16	26.45	0.77	0.20	0.24	78.05

						L&M	IAF	
A1105	Guard Rail Installer	40.49	10.16	26.45	0.77	0.20	0.24	78.31

Laborers (The Alaska areas north of N63 latitude and east of W138 longitude)

*See per diem note on last page

						L&M	LEG	
N1201	Group I, including:	36.00	9.55	21.16	1.65	0.30	0.20	68.86
	Asphalt Worker (shovelman, plant crew)							
	Brush Cutter							
	Camp Maintenance Laborer							
	Carpenter Tender or Helper							
	Choke Setter, Hook Tender, Rigger, Signalman							
	Concrete Labor (curb & gutter, chute handler, curing, grouting, screeding)							
	Crusher Plant Laborer							
	Demolition Laborer							

Wage benefits key: BHR=basic hourly rate; H&W=health and welfare; IAF=industry advancement fund; LEG=legal fund; L&M=labor/management fund; PEN=pension fund; SAF=safety; SUI=supplemental unemployment insurance; S&L=SUI & LEG combined; TRN=training; THR=total hourly rate; VAC=vacation

Laborers (The Alaska areas north of N63 latitude and east of W138 longitude)

*See per diem note on last page

						L&M	LEG	
N1201	Group I, including:	36.00	9.55	21.16	1.65	0.30	0.20	68.86

Ditch Digger
 Dumpman
 Environmental Laborer (hazard/toxic waste, oil spill)
 Fence Installer
 Fire Watch Laborer
 Flagman
 Form Stripper
 General Laborer
 Guardrail Laborer, Bridge Rail Installer
 Hydro Seeder Nozzleman
 Laborer, Building
 Landscaper or Planter
 Laying of Mortarless Decorative Block (retaining walls, flowered decorative block 4 feet or less - highway or landscape work)
 Material Handler
 Pneumatic or Power Tools
 Portable or Chemical Toilet Serviceman
 Pump Man or Mixer Man
 Railroad Track Laborer
 Sandblast, Pot Tender
 Saw Tender
 Slurry Work
 Steam Cleaner Operator
 Steam Point or Water Jet Operator
 Storm Water Pollution Protection Plan Worker (SWPPP Worker - erosion and sediment control Laborer)
 Tank Cleaning
 Utiliwalk & Utilidor Laborer
 Watchman (construction projects)
 Window Cleaner

						L&M	LEG	
N1202	Group II, including:	37.00	9.55	21.16	1.65	0.30	0.20	69.86

Burning & Cutting Torch
 Cement or Lime Dumper or Handler (sack or bulk)
 Certified Erosion Sediment Control Lead (CESCL Laborer)
 Choker Splicer
 Chucktender (wagon, air-track & hydraulic drills)
 Concrete Laborer (power buggy, concrete saws, pumpcrete nozzleman, vibratorman)
 Culvert Pipe Laborer
 Cured Inplace Pipelayer

Wage benefits key: BHR=basic hourly rate; H&W=health and welfare; IAF=industry advancement fund; LEG=legal fund; L&M=labor/management fund; PEN=pension fund; SAF=safety; SUI=supplemental unemployment insurance; S&L=SUI & LEG combined; TRN=training; THR=total hourly rate; VAC=vacation

Class Code	Classification of Laborers & Mechanics	BHR	H&W	PEN	TRN	Other	Benefits	THR
------------	--	-----	-----	-----	-----	-------	----------	-----

Laborers (The Alaska areas north of N63 latitude and east of W138 longitude)

*See per diem note on last page

						L&M	LEG	
N1202	Group II, including:	37.00	9.55	21.16	1.65	0.30	0.20	69.86

Environmental Laborer (asbestos, marine work)
Floor Preparation, Core Drilling
Foam Gun or Foam Machine Operator
Green Cutter (dam work)
Guniting Operator
Hod Carrier
Jackhammer/Chipping Gun or Pavement Breaker
Laser Instrument Operator
Laying of Mortarless Decorative Block (retaining walls, flowered decorative block over 4 feet - highway or landscape work)
Mason Tender & Mud Mixer (sewer work)
Pilot Car
Pipelayer Helper
Plasterer, Bricklayer & Cement Finisher Tender
Powderman Helper
Power Saw Operator
Railroad Switch Layout Laborer
Sandblaster
Scaffold Building & Erecting
Sewer Caulker
Sewer Plant Maintenance Man
Thermal Plastic Applicator
Timber Faller, Chainsaw Operator, Filer
Timberman

						L&M	LEG	
N1203	Group III, including:	37.90	9.55	21.16	1.65	0.30	0.20	70.76

Bit Grinder
Camera/Tool/Video Operator
Guardrail Machine Operator
High Rigger & Tree Topper
High Scaler
Multiplate
Plastic Welding
Slurry Seal Squeegee Man
Traffic Control Supervisor
Welding Certified (in connection with laborer's work)

						L&M	LEG	
N1204	Group IIIA	41.78	9.55	21.16	1.65	0.30	0.20	74.64

Asphalt Raker, Asphalt Belly Dump Lay Down
Drill Doctor (in the field)

Wage benefits key: BHR=basic hourly rate; H&W=health and welfare; IAF=industry advancement fund; LEG=legal fund; L&M=labor/management fund; PEN=pension fund; SAF=safety; SUI=supplemental unemployment insurance; S&L=SUI & LEG combined; TRN=training; THR=total hourly rate; VAC=vacation

Class Code	Classification of Laborers & Mechanics	BHR	H&W	PEN	TRN	Other	Benefits	THR
Laborers (The Alaska areas north of N63 latitude and east of W138 longitude)								
*See per diem note on last page								
N1204	Group IIIA	41.78	9.55	21.16	1.65	L&M 0.30	LEG 0.20	74.64
	Driller (including, but not limited to wagon drills, air-track drills, hydraulic drills)							
	Pioneer Drilling & Drilling Off Tugger (all type drills)							
	Pipelayers							
	Powderman (Employee Possessor)							
	Storm Water Pollution Protection Plan Specialist (SWPPP Specialist)							
	Traffic Control Supervisor, DOT Qualified							
N1205	Group IV	25.57	9.55	21.16	1.65	L&M 0.30	LEG 0.20	58.43
	Final Building Cleanup							
	Permanent Yard Worker							
N1206	Group IIIB	47.36	5.50	21.16	1.65	L&M 0.30	LEG 0.20	76.17
	Driller (including, but not limited to wagon drills, air-track drills, hydraulic drills)(over 5,000 hours)							
	Federal Powderman (Responsible Person in Charge)							
	Grade Checking (setting or transferring of grade marks, line and grade, GPS, drones)							
	Pioneer Drilling & Drilling Off Tugger (all type drills)(over 5,000 hours)							
	Stake Hopper							
Laborers (The area that is south of N63 latitude and west of W138 longitude)								
*See per diem note on last page								
S1201	Group I, including:	36.00	9.55	21.16	1.65	L&M 0.30	LEG 0.20	68.86
	Asphalt Worker (shovelman, plant crew)							
	Brush Cutter							
	Camp Maintenance Laborer							
	Carpenter Tender or Helper							
	Choke Setter, Hook Tender, Rigger, Signalman							
	Concrete Labor (curb & gutter, chute handler, curing, grouting, screeding)							
	Crusher Plant Laborer							
	Demolition Laborer							
	Ditch Digger							
	Dumpman							
	Environmental Laborer (hazard/toxic waste, oil spill)							
	Fence Installer							
	Fire Watch Laborer							
	Flagman							

Wage benefits key: BHR=basic hourly rate; H&W=health and welfare; IAF=industry advancement fund; LEG=legal fund; L&M=labor/management fund; PEN=pension fund; SAF=safety; SUI=supplemental unemployment insurance; S&L=SUI & LEG combined; TRN=training; THR=total hourly rate; VAC=vacation

Class Code	Classification of Laborers & Mechanics	BHR	H&W	PEN	TRN	Other	Benefits	THR
------------	--	-----	-----	-----	-----	-------	----------	-----

Laborers (The area that is south of N63 latitude and west of W138 longitude)

*See per diem note on last page

						L&M	LEG	
S1201	Group I, including:	36.00	9.55	21.16	1.65	0.30	0.20	68.86

Form Stripper
General Laborer
Guardrail Laborer, Bridge Rail Installer
Hydro Seeder Nozzleman
Laborer, Building
Landscape or Planter
Laying of Mortarless Decorative Block (retaining walls, flowered decorative block 4 feet or less - highway or landscape work)
Material Handler
Pneumatic or Power Tools
Portable or Chemical Toilet Serviceman
Pump Man or Mixer Man
Railroad Track Laborer
Sandblast, Pot Tender
Saw Tender
Slurry Work
Steam Cleaner Operator
Steam Point or Water Jet Operator
Storm Water Pollution Protection Plan Worker (SWPPP Worker - erosion and sediment control Laborer)
Tank Cleaning
Utiliwalk & Utilidor Laborer
Watchman (construction projects)
Window Cleaner

						L&M	LEG	
S1202	Group II, including:	37.00	9.55	21.16	1.65	0.30	0.20	69.86

Burning & Cutting Torch
Cement or Lime Dumper or Handler (sack or bulk)
Certified Erosion Sediment Control Lead (CESCL Laborer)
Choker Splicer
Chucktender (wagon, air-track & hydraulic drills)
Concrete Laborer (power buggy, concrete saws, pumpcrete nozzleman, vibratorman)
Culvert Pipe Laborer
Cured Inplace Pipelayer
Environmental Laborer (asbestos, marine work)
Floor Preparation, Core Drilling
Foam Gun or Foam Machine Operator
Green Cutter (dam work)
Guniting Operator
Hod Carrier

Wage benefits key: BHR=basic hourly rate; H&W=health and welfare; IAF=industry advancement fund; LEG=legal fund; L&M=labor/management fund; PEN=pension fund; SAF=safety; SUI=supplemental unemployment insurance; S&L=SUI & LEG combined; TRN=training; THR=total hourly rate; VAC=vacation

Class Code	Classification of Laborers & Mechanics	BHR	H&W	PEN	TRN	Other	Benefits	THR
------------	--	-----	-----	-----	-----	-------	----------	-----

Laborers (The area that is south of N63 latitude and west of W138 longitude)

*See per diem note on last page

						L&M	LEG	
S1202	Group II, including:	37.00	9.55	21.16	1.65	0.30	0.20	69.86

Jackhammer/Chipping Gun or Pavement Breaker
Laser Instrument Operator
Laying of Mortarless Decorative Block (retaining walls, flowered decorative block over 4 feet - highway or landscape work)
Mason Tender & Mud Mixer (sewer work)
Pilot Car
Pipelayer Helper
Plasterer, Bricklayer & Cement Finisher Tender
Powderman Helper
Power Saw Operator
Railroad Switch Layout Laborer
Sandblaster
Scaffold Building & Erecting
Sewer Caulker
Sewer Plant Maintenance Man
Thermal Plastic Applicator
Timber Faller, Chainsaw Operator, Filer
Timberman

						L&M	LEG	
S1203	Group III, including:	37.90	9.55	21.16	1.65	0.30	0.20	70.76

Bit Grinder
Camera/Tool/Video Operator
Guardrail Machine Operator
High Rigger & Tree Topper
High Scaler
Multiplate
Plastic Welding
Slurry Seal Squeegee Man
Traffic Control Supervisor
Welding Certified (in connection with laborer's work)

						L&M	LEG	
S1204	Group IIIA	41.78	9.55	21.16	1.65	0.30	0.20	74.64

Asphalt Raker, Asphalt Belly Dump Lay Down
Drill Doctor (in the field)
Driller (including, but not limited to wagon drills, air-track drills, hydraulic drills)
Pioneer Drilling & Drilling Off Tugger (all type drills)
Pipelayers
Powderman (Employee Possessor)
Storm Water Pollution Protection Plan Specialist (SWPPP Specialist)

Wage benefits key: BHR=basic hourly rate; H&W=health and welfare; IAF=industry advancement fund; LEG=legal fund; L&M=labor/management fund; PEN=pension fund; SAF=safety; SUI=supplemental unemployment insurance; S&L=SUI & LEG combined; TRN=training; THR=total hourly rate; VAC=vacation

Class Code	Classification of Laborers & Mechanics	BHR	H&W	PEN	TRN	Other	Benefits	THR
Laborers (The area that is south of N63 latitude and west of W138 longitude)								
*See per diem note on last page								
S1204	Group IIIA	41.78	9.55	21.16	1.65	L&M	LEG	
	Traffic Control Supervisor, DOT Qualified					0.30	0.20	74.64
S1205	Group IV	25.57	9.55	21.16	1.65	L&M	LEG	
	Final Building Cleanup					0.30	0.20	58.43
	Permanent Yard Worker							
S1206	Group IIIB	47.36	5.50	21.16	1.65	L&M	LEG	
	Driller (including, but not limited to wagon drills, air-track drills, hydraulic drills)(over 5,000 hours)					0.30	0.20	76.17
	Federal Powderman (Responsible Person in Charge)							
	Grade Checking (setting or transferring of grade marks, line and grade, GPS, drones)							
	Pioneer Drilling & Drilling Off Tugger (all type drills)(over 5,000 hours)							
	Stake Hopper							
Millwrights								
*See per diem note on last page								
A1251	Millwright (journeyman)	51.38	10.35	12.87	1.10	L&M		
						0.40	0.05	76.15
A1252	Millwright Welder	52.38	10.35	12.87	1.10	L&M		
						0.40	0.05	77.15
Painters, Region I (North of N63 latitude)								
*See per diem note on last page								
N1301	Group I, including:	37.83	9.77	15.10	1.08	L&M		
	Brush					0.07		63.85
	General Painter							
	Hand Taping							
	Hazardous Material Handler							
	Lead-Based Paint Abatement							
	Roll							
N1302	Group II, including:	38.35	9.77	15.10	1.08	L&M		
	Bridge Painter					0.07		64.37
	Epoxy Applicator							
	General Drywall Finisher							
	Hand/Spray Texturing							
	Industrial Coatings Specialist							

Wage benefits key: BHR=basic hourly rate; H&W=health and welfare; IAF=industry advancement fund; LEG=legal fund; L&M=labor/management fund; PEN=pension fund; SAF=safety; SUI=supplemental unemployment insurance; S&L=SUI & LEG combined; TRN=training; THR=total hourly rate; VAC=vacation

Class Code	Classification of Laborers & Mechanics	BHR	H&W	PEN	TRN	Other Benefits	THR
---------------	--	-----	-----	-----	-----	----------------	-----

Painters, Region I (North of N63 latitude)

*See per diem note on last page

						L&M	
N1302	Group II, including:	38.35	9.77	15.10	1.08	0.07	64.37

Machine/Automatic Taping
Pot Tender
Sandblasting
Specialty Painter
Spray
Structural Steel Painter
Wallpaper/Vinyl Hanger

N1304	Group IV, including:	42.24	9.77	18.21	1.05	0.05	71.32
--------------	----------------------	-------	------	-------	------	------	-------

Glazier
Storefront/Automatic Door Mechanic

N1305	Group V, including:	39.86	9.77	5.00	1.10	0.10	55.83
--------------	---------------------	-------	------	------	------	------	-------

Carpet Installer
Floor Coverer
Heat Weld/Cove Base
Linoleum/Soft Tile Installer

N1306	Group VI, including:	70.00	10.79	5.00	1.10	0.10	86.99
--------------	----------------------	-------	-------	------	------	------	-------

Traffic Control Striper

Painters, Region II (South of N63 latitude)

*See per diem note on last page

						L&M	
S1301	Group I, including :	34.47	9.77	16.45	1.08	0.07	61.84

Brush
General Painter
Hand Taping
Hazardous Material Handler
Lead-Based Paint Abatement
Roll
Spray

						L&M	
S1302	Group II, including :	35.72	9.77	16.45	1.08	0.07	63.09

General Drywall Finisher
Hand/Spray Texturing
Machine/Automatic Taping
Wallpaper/Vinyl Hanger

Wage benefits key: BHR=basic hourly rate; H&W=health and welfare; IAF=industry advancement fund; LEG=legal fund; L&M=labor/management fund; PEN=pension fund; SAF=safety; SUI=supplemental unemployment insurance; S&L=SUI & LEG combined; TRN=training; THR=total hourly rate; VAC=vacation

Class Code	Classification of Laborers & Mechanics	BHR	H&W	PEN	TRN	Other	Benefits	THR
Painters, Region II (South of N63 latitude)								
*See per diem note on last page								
S1303	Group III, including :	35.72	9.77	16.45	1.08	L&M		63.09
	Bridge Painter							
	Epoxy Applicator							
	Industrial Coatings Specialist							
	Pot Tender							
	Sandblasting							
	Specialty Painter							
	Structural Steel Painter							
S1304	Group IV, including:	42.45	9.77	17.25	1.08	L&M		70.62
	Glazier							
	Storefront/Automatic Door Mechanic							
S1305	Group V, including:	39.86	9.77	5.00	1.10	L&M		55.83
	Carpet Installer							
	Floor Coverer							
	Heat Weld/Cove Base							
	Linoleum/Soft Tile Installer							
S1306	Group VI, including:	70.00	10.79	5.00	1.10	L&M		86.99
	Traffic Control Stripper							
Piledrivers								
*See per diem note on last page								
A1401	Piledriver	44.39	10.35	15.82	1.75	L&M		72.71
	Assistant Dive Tender							
	Carpenter/Piledriver							
	Rigger							
	Sheet Stabber							
	Skiff Operator							
A1402	Piledriver-Welder/Toxic Worker	45.39	10.35	15.82	1.75	L&M		73.71
A1403	Remotely Operated Vehicle Pilot/Technician	48.70	10.35	15.82	1.75	L&M		77.02
	Single Atmosphere Suit, Bell or Submersible Pilot							
A1404	Diver (working) **See note on last page	88.50	10.35	15.82	1.75	L&M		116.82

Wage benefits key: BHR=basic hourly rate; H&W=health and welfare; IAF=industry advancement fund; LEG=legal fund; L&M=labor/management fund; PEN=pension fund; SAF=safety; SUI=supplemental unemployment insurance; S&L=SUI & LEG combined; TRN=training; THR=total hourly rate; VAC=vacation

Class Code	Classification of Laborers & Mechanics	BHR	H&W	PEN	TRN	Other Benefits	THR
Piledrivers							
*See per diem note on last page							
A1405	Diver (standby) **See note on last page	48.70	10.35	15.82	1.75	L&M 0.20	IAF 0.20 77.02
A1406	Dive Tender **See note on last page	47.70	10.35	15.82	1.75	L&M 0.20	IAF 0.20 76.02
A1407	Welder (American Welding Society, Certified Welding Inspector)	49.95	10.35	15.82	1.75	L&M 0.20	IAF 0.20 78.27
Plumbers, Region I (North of N63 latitude)							
*See per diem note on last page							
N1501	Journeyman Pipefitter	46.86	12.00	18.20	1.75	L&M 1.20	S&L 80.01
	Plumber						
	Welder						
Plumbers, Region II (South of N63 latitude)							
*See per diem note on last page							
S1501	Journeyman Pipefitter	41.00	12.38	15.27	1.55	L&M 0.20	70.40
	Plumber						
	Welder						
Plumbers, Region IIA (1st Judicial District)							
*See per diem note on last page							
X1501	Journeyman Pipefitter	43.50	14.17	11.75	2.95	L&M 0.24	72.61
	Plumber						
	Welder						
Power Equipment Operators							
*See per diem note on last page							
A1601	Group I, including:	47.74	11.40	14.75	1.00	L&M 0.10	0.05 75.04
	Asphalt Roller: Breakdown, Intermediate, and Finish						
	Back Filler						
	Barrier Machine (Zipper)						
	Belcrete with Power Pack & similar conveyors						
	Bending Machine						
	Boat Coxswain						
	Bulldozer						
	Cableways, Highlines & Cablecars						

Wage benefits key: BHR=basic hourly rate; H&W=health and welfare; IAF=industry advancement fund; LEG=legal fund; L&M=labor/management fund; PEN=pension fund; SAF=safety; SUI=supplemental unemployment insurance; S&L=SUI & LEG combined; TRN=training; THR=total hourly rate; VAC=vacation

Power Equipment Operators

*See per diem note on last page

								L&M				
A1601	Group I, including:					47.74	11.40	14.75	1.00	0.10	0.05	75.04
	Cleaning Machine											
	Coating Machine											
	Concrete Hydro Blaster											
	Cranes (45 tons & under or 150 feet of boom & under (including jib & attachments))											
	(a) Hydralifts or Transporters, (all track or truck type)											
	(b) Derricks											
	(c) Overhead											
	Crushers											
	Deck Winches, Double Drum											
	Ditching or Trenching Machine (16 inch or over)											
	Drag Scraper, Yarder, and similar types											
	Drilling Machines, Core, Cable, Rotary and Exploration											
	Finishing Machine Operator, Concrete Paving, Laser Screed, Sidewalk, Curb & Gutter Machine											
	Grade Checker and/or Line and Grade including Drone											
	Helicopters											
	Hover Craft, Flex Craft, Loadmaster, Air Cushion, All-Terrain Vehicle, Rollagon, Bargecable, Nodwell, & Snow Cat											
	Hydro Ax, Feller Buncher & similar											
	Hydro Excavation (Vac-Truck and Similar)											
	Loaders (2 1/2 yards through 5 yards, including all attachments):											
	(a) Forklifts (with telescopic boom & swing attachment)											
	(b) Front End & Overhead, (2-1/2 yards through 5 yards)											
	(c) Loaders, (with forks or pipe clamp)											
	(d) Loaders, (elevating belt type, Euclid & similar types)											
	Material Transfer Vehicle (Elevating Grader, Pickup Machine, and similar types)											
	Mechanic, Welder, Bodyman, Electrical, Camp & Maintenance Engineer											
	Micro Tunneling Machine											
	Mixers: Mobile type with hoist combination											
	Motor Patrol Grader											
	Mucking Machine: Mole, Tunnel Drill, Horizontal/Directional Drill Operator and/or Shield											
	Off-Road Hauler (including Articulating and Haul Trucks)											
	Operator on Dredges											
	Piledriver Engineer, L.B. Foster, Puller or similar paving breaker											
	Plant Operator (Asphalt & Concrete)											
	Power Plant, Turbine Operator 200 k.w & over (power plants or combination of power units over 300 k.w.)											
	Remote Controlled Equipment											
	Scraper (through 40 yards)											

Wage benefits key: BHR=basic hourly rate; H&W=health and welfare; IAF=industry advancement fund; LEG=legal fund; L&M=labor/management fund; PEN=pension fund; SAF=safety; SUI=supplemental unemployment insurance; S&L=SUI & LEG combined; TRN=training; THR=total hourly rate; VAC=vacation

Class Code	Classification of Laborers & Mechanics	BHR	H&W	PEN	TRN	Other	Benefits	THR
------------	--	-----	-----	-----	-----	-------	----------	-----

Power Equipment Operators

*See per diem note on last page

						L&M		
A1601	Group I, including:	47.74	11.40	14.75	1.00	0.10	0.05	75.04

Service Oiler/Service Engineer
Shot Blast Machine
Shovels, Backhoes, Excavators with all attachments, and Gradealls (3 yards & under)
Sideboom (under 45 tons)
Sub Grader (Gurries & similar types)
Tack Tractor
Truck Mounted Concrete Pump, Conveyor/Tele-belt, & Creter
Wate Kote Machine

						L&M		
A1602	Group IA, including:	49.64	11.40	14.75	1.00	0.10	0.05	76.94

Camera/Tool/Video Operator (Slipline)
Certified Welder, Electrical Mechanic, Camp Maintenance Engineer, Mechanic (over 10,000 hours)
Cranes (over 45 tons or 150 feet including jib & attachments)
(a) Clamshells & Draglines (over 3 yards)
(b) Tower Cranes
Licensed Water/Waste Water Treatment Operator
Loaders (over 5 yards)
Motor Patrol Grader, Dozer, Grade Tractor (finish: when finishing to final grade and/or to hubs, or for asphalt)
Power Plants (1000 k.w. & over)
Profiler, Reclaimer, and Roto-Mill
Quad
Scrapers (over 40 yards)
Screed
Shovels, Backhoes, Excavators with all attachments (over 3 yards)
Sidebooms (over 45 tons)
Slip Form Paver, C.M.I. & similar types
Topside (Asphalt Paver, Slurry machine, Spreaders, and similar types)

						L&M		
A1603	Group II, including:	46.91	11.40	14.75	1.00	0.10	0.05	74.21

Boiler - Fireman
Cement Hogs & Concrete Pump Operator
Conveyors (except those listed in Group I)
Hoists on Steel Erection, Towermobiles & Air Tuggers
Horizontal/Directional Drill Locator
Locomotives, Rod & Geared Engines
Mixers
Screening, Washing Plant

Wage benefits key: BHR=basic hourly rate; H&W=health and welfare; IAF=industry advancement fund; LEG=legal fund; L&M=labor/management fund; PEN=pension fund; SAF=safety; SUI=supplemental unemployment insurance; S&L=SUI & LEG combined; TRN=training; THR=total hourly rate; VAC=vacation

Class Code	Classification of Laborers & Mechanics	BHR	H&W	PEN	TRN	Other	Benefits	THR
Power Equipment Operators								
*See per diem note on last page								
A1603	Group II, including:	46.91	11.40	14.75	1.00	0.10	0.05	74.21
	Sideboom (cradling rock drill, regardless of size)							
	Skidder							
	Trenching Machines (under 16 inches)							
	Water/Waste Water Treatment Operator							
A1604	Group III, including:	46.13	11.40	14.75	1.00	0.10	0.05	73.43
	"A" Frame Trucks, Deck Winches							
	Bombardier (tack or tow rig)							
	Boring Machine							
	Brooms, Power (sweeper, elevator, vacuum, or similar)							
	Bump Cutter							
	Compressor							
	Farm Tractor							
	Forklift, Industrial Type							
	Gin Truck or Winch Truck (with poles when used for hoisting)							
	Hoists, Air Tuggers, Elevators							
	Loaders:							
	(a) Elevating-Athey, Barber Greene & similar types							
	(b) Forklifts or Lumber Carrier (on construction job sites)							
	(c) Forklifts, (with tower)							
	(d) Overhead & Front End, (under 2-1/2 yards)							
	Locomotives: Dinkey (air, steam, gas & electric) Speeders							
	Mechanics, Light Duty							
	Oil, Blower Distribution							
	Posthole Digger, Mechanical							
	Pot Fireman (power agitated)							
	Power Plant, Turbine Operator, (under 200 k.w.)							
	Pumps, Water							
	Roller (other than Asphalt)							
	Saws, Concrete							
	Skid Hustler							
	Skid Steer (with all attachments)							
	Stake Hopper							
	Straightening Machine							
	Tow Tractor							
A1605	Group IV, including:	39.42	11.40	14.75	1.00	0.10	0.05	66.72
	Crane Assistant Engineer/Rig Oiler							
	Drill Helper							
	Parts & Equipment Coordinator							

Wage benefits key: BHR=basic hourly rate; H&W=health and welfare; IAF=industry advancement fund; LEG=legal fund; L&M=labor/management fund; PEN=pension fund; SAF=safety; SUI=supplemental unemployment insurance; S&L=SUI & LEG combined; TRN=training; THR=total hourly rate; VAC=vacation

Class Code	Classification of Laborers & Mechanics	BHR	H&W	PEN	TRN	Other	Benefits	THR
Power Equipment Operators								
*See per diem note on last page								
		L&M						
A1605	Group IV, including:	39.42	11.40	14.75	1.00	0.10	0.05	66.72
	Spotter							
	Steam Cleaner							
	Swamper (on trenching machines or shovel type equipment)							
Roofers								
*See per diem note on last page								
		L&M						
A1701	Roofer & Waterproofer	47.62	13.75	3.91	0.81	0.10	0.06	66.25
		L&M						
A1702	Roofer Material Handler	34.23	13.75	3.91	0.81	0.10	0.06	52.86
Sheet Metal Workers, Region I (North of N63 latitude)								
*See per diem note on last page								
		L&M						
N1801	Sheet Metal Journeyman	51.93	12.55	15.86	1.80	0.12		82.26
	Air Balancing and duct cleaning of HVAC systems							
	Brazing, soldering or welding of metals							
	Demolition of sheet metal HVAC systems							
	Fabrication and installation of exterior wall sheathing, siding, metal roofing, flashing, decking and architectural sheet metal work							
	Fabrication and installation of heating, ventilation and air conditioning ducts and equipment							
	Fabrication and installation of louvers and hoods							
	Fabrication and installation of sheet metal lagging							
	Fabrication and installation of stainless steel commercial or industrial food service equipment							
	HVAC-R Service Mechanic, servicing and maintaining HVAC-R Systems							
	Manufacture, fabrication assembly, installation and alteration of all ferrous and nonferrous metal work							
	Metal lavatory partitions							
	Preparation of drawings taken from architectural and engineering plans required for fabrication and erection of sheet metal work							
	Sheet Metal shelving							
	Sheet Metal venting, chimneys and breaching							
	Skylight installation							
Sheet Metal Workers, Region II (South of N63 latitude)								
*See per diem note on last page								

Wage benefits key: BHR=basic hourly rate; H&W=health and welfare; IAF=industry advancement fund; LEG=legal fund; L&M=labor/management fund; PEN=pension fund; SAF=safety; SUI=supplemental unemployment insurance; S&L=SUI & LEG combined; TRN=training; THR=total hourly rate; VAC=vacation

Class Code	Classification of Laborers & Mechanics	BHR	H&W	PEN	TRN	Other Benefits	THR
------------	--	-----	-----	-----	-----	----------------	-----

Sheet Metal Workers, Region II (South of N63 latitude)

*See per diem note on last page

						L&M	
S1801	Sheet Metal Journeyman	47.05	12.55	14.90	2.01	0.43	76.94
	Air Balancing and duct cleaning of HVAC systems						
	Brazing, soldering or welding of metals						
	Demolition of sheet metal HVAC systems						
	Fabrication and installation of exterior wall sheathing, siding, metal roofing, flashing, decking and architectural sheet metal work						
	Fabrication and installation of heating, ventilation and air conditioning ducts and equipment						
	Fabrication and installation of louvers and hoods						
	Fabrication and installation of sheet metal lagging						
	Fabrication and installation of stainless steel commercial or industrial food service equipment						
	HVAC-R Service Mechanic, servicing and maintaining HVAC-R Systems						
	Manufacture, fabrication assembly, installation and alteration of all ferrous and nonferrous metal work						
	Metal lavatory partitions						
	Preparation of drawings taken from architectural and engineering plans required for fabrication and erection of sheet metal work						
	Sheet Metal shelving						
	Sheet Metal venting, chimneys and breaching						
	Skylight installation						

Sprinkler Fitters

*See per diem note on last page

						L&M	
A1901	Sprinkler Fitter	54.01	11.45	18.25	0.52	0.25	84.48

Surveyors

*See per diem note on last page

						L&M	
A2001	Chief of Parties	54.50	12.48	13.64	1.20	0.10	81.92
						L&M	
A2002	Party Chief	50.69	12.48	13.64	1.20	0.10	78.11
						L&M	
A2003	Line & Grade Technician/Office Technician/GPS, Drones	47.94	12.48	13.64	1.20	0.10	75.36
						L&M	
A2004	Associate Party Chief (including Instrument Person & Head Chain Person)/Stake Hop/Grademan	45.69	12.48	13.64	1.20	0.10	73.11

Wage benefits key: BHR=basic hourly rate; H&W=health and welfare; IAF=industry advancement fund; LEG=legal fund; L&M=labor/management fund; PEN=pension fund; SAF=safety; SUI=supplemental unemployment insurance; S&L=SUI & LEG combined; TRN=training; THR=total hourly rate; VAC=vacation

Class Code	Classification of Laborers & Mechanics	BHR	H&W	PEN	TRN	Other	Benefits	THR
Surveyors								
*See per diem note on last page								
A2006	Chain Person (for crews with more than 2 people)	41.09	12.48	13.64	1.20		L&M 0.10	68.51
Truck Drivers								
*See per diem note on last page								
A2101	Group I, including:	46.84	12.48	13.64	1.20		L&M 0.10	74.26
	Air/Sea Traffic Controllers							
	Ambulance/Fire Truck Driver (EMT certified)							
	Boat Coxswain							
	Captains & Pilots (air & water)							
	Deltas, Commanders, Rollagons, & similar equipment (when pulling sleds, trailers or similar equipment)							
	Dump Trucks (including articulating end dumps, rockbuggy, side dump, belly dump, & trucks with pups) over 40 yards up to & including 60 yards							
	Fueler							
	Helicopter Transporter							
	Liquid Vac Truck/Super Vac Truck							
	Material Coordinator or Purchasing Agent							
	Oil Distributor Truck							
	Ready-mix (over 12 yards up to & including 15 yards) (over 15 yards to be negotiated)							
	Semi with Double Box Mixer							
	Tireman, Medium Duty (Truck Tires up to 1200-24")							
	Water Wagon (250 Bbbs and above)							
A2102	Group 1A including:	48.19	12.48	13.64	1.20		L&M 0.10	75.61
	Dump Trucks (including rockbuggy, side dump, belly dump & trucks with pups) over 60 yards up to & including 100 yards (over 100 yards to be negotiated)							
	Jeeps (driver under load)							
	Lowboys, including tractor attached trailers & jeeps, up to & including 12 axles (over 12 axles or 150 tons to be negotiated)							
	Tireman Heavy Duty (earthmover tires, i.e., loader, scraper, haul truck)							
A2103	Group II, including:	45.51	12.48	13.64	1.20		L&M 0.10	72.93
	All Deltas, Commanders, Rollagons, & similar equipment							
	Batch Trucks (8 yards & up)							
	Batch Trucks (up to & including 7 yards)							
	Boom Truck/Knuckle Truck (over 5 tons)							
	Cacasco Truck/Heat Stress Truck							
	Construction and Material Safety Technician							

Wage benefits key: BHR=basic hourly rate; H&W=health and welfare; IAF=industry advancement fund; LEG=legal fund; L&M=labor/management fund; PEN=pension fund; SAF=safety; SUI=supplemental unemployment insurance; S&L=SUI & LEG combined; TRN=training; THR=total hourly rate; VAC=vacation

Class Code	Classification of Laborers & Mechanics	BHR	H&W	PEN	TRN	Other	Benefits	THR
Truck Drivers								
*See per diem note on last page								
A2103	Group II, including:	45.51	12.48	13.64	1.20		L&M 0.10	72.93
	Dump Trucks (including articulating end dump, rockbuggy, side dump, belly dump, & trucks with pups) over 20 yards up to & including 40 yards							
	Gin Pole Truck, Winch Truck, Wrecker (truck mounted "A" frame manufactured rating over 5 tons)							
	Mechanics							
	Partsman							
	Ready-mix (up to & including 12 yards)							
	Stringing Truck							
	Turn-O-Wagon or DW-10 (not self loading)							
A2104	Group III, including:	44.64	12.48	13.64	1.20		L&M 0.10	72.06
	Boom Truck/Knuckle Truck (up to & including 5 tons)							
	Dump Trucks (including articulating end dump, rockbuggy, side dump, belly dump, & trucks with pups) over 10 yards up to & including 20 yards							
	Expeditor (electrical & pipefitting materials)							
	Gin Pole Truck, Winch Truck, Wrecker (truck mounted "A" frame manufactured rating 5 tons & under)							
	Greaser - Shop							
	Semi or Truck & Trailer							
	Thermal Plastic Layout Technician							
	Traffic Control Technician							
	Trucks/Jeeps (push or pull)							
A2105	Group IV, including:	44.02	12.48	13.64	1.20		L&M 0.10	71.44
	Air Cushion or similar type vehicle							
	All Terrain Vehicle							
	Buggymobile							
	Bull Lift & Fork Lift, Fork Lift with Power Boom & Swing Attachment (over 5 tons)							
	Bus Operator (over 30 passengers)							
	Cement Spreader, Dry							
	Combination Truck-Fuel & Grease							
	Compactor (when pulled by rubber tired equipment)							
	Dump Trucks (including rockbuggy, side dump, belly dump, & trucks with pups) up to & including 10 yards							
	Dumpster							
	Expeditor (general)							
	Fire Truck/Ambulance Driver							
	Flat Beds, Dual Rear Axle							
	Foam Distributor Truck Dual Axle							
	Front End Loader with Fork							

Wage benefits key: BHR=basic hourly rate; H&W=health and welfare; IAF=industry advancement fund; LEG=legal fund; L&M=labor/management fund; PEN=pension fund; SAF=safety; SUI=supplemental unemployment insurance; S&L=SUI & LEG combined; TRN=training; THR=total hourly rate; VAC=vacation

Class Code	Classification of Laborers & Mechanics	BHR	H&W	PEN	TRN	Other	Benefits	THR
------------	--	-----	-----	-----	-----	-------	----------	-----

Truck Drivers

*See per diem note on last page

							L&M	
A2105	Group IV, including:	44.02	12.48	13.64	1.20	0.10		71.44
	Grease Truck							
	Hydro Seeder, Dual Axle							
	Hyster Operators (handling bulk aggregate)							
	Loadmaster (air & water operations)							
	Lumber Carrier							
	Ready-mix, (up to & including 7 yards)							
	Rigger (air/water/oilfield)							
	Tireman, Light Duty							
	Track Truck Equipment							
	Truck Vacuum Sweeper							
	Warehouseperson							
	Water Truck (Below 250 Bbls)							
	Water Truck (straight)							
	Water Wagon, Semi							

							L&M	
A2106	Group V, including:	43.22	12.48	13.64	1.20	0.10		70.64
	Buffer Truck							
	Bull Lifts & Fork Lifts, Fork Lifts with Power Boom & Swing Attachments (up to & including 5 tons)							
	Bus Operator (up to 30 passengers)							
	Farm Type Rubber Tired Tractor (when material handling or pulling wagons on a construction project)							
	Flat Beds, Single Rear Axle							
	Foam Distributor Truck Single Axle							
	Fuel Handler (station/bulk attendant)							
	Gear/Supply Truck							
	Gravel Spreader Box Operator on Truck							
	Hydro Seeder, Single Axle							
	Pickups (pilot cars & all light-duty vehicles)							
	Rigger							
	Swamper							
	Tack Truck (welders/gear)							
	Team Drivers (horses, mules, & similar equipment)							

Tunnel Workers, Laborers (The Alaska areas north of N63 latitude and east of W138 longitude)

*See per diem note on last page

							L&M	LEG	
N2201	Group I, including:	39.60	9.55	21.16	1.65	0.30	0.20		72.46
	Brakeman								
	Mucker								

Wage benefits key: BHR=basic hourly rate; H&W=health and welfare; IAF=industry advancement fund; LEG=legal fund; L&M=labor/management fund; PEN=pension fund; SAF=safety; SUI=supplemental unemployment insurance; S&L=SUI & LEG combined; TRN=training; THR=total hourly rate; VAC=vacation

Class Code	Classification of Laborers & Mechanics	BHR	H&W	PEN	TRN	Other	Benefits	THR
---------------	--	-----	-----	-----	-----	-------	----------	-----

Tunnel Workers, Laborers (The Alaska areas north of N63 latitude and east of W138 longitude)

*See per diem note on last page

						L&M	LEG	
N2201	Group I, including:	39.60	9.55	21.16	1.65	0.30	0.20	72.46

Nipper
Storm Water Pollution Protection Plan Worker (SWPPP Worker -
erosion and sediment control Laborer)
Topman & Bull Gang
Tunnel Track Laborer

						L&M	LEG	
N2202	Group II, including:	40.70	9.55	21.16	1.65	0.30	0.20	73.56

Burning & Cutting Torch
Certified Erosion Sediment Control Lead (CESCL Laborer)
Concrete Laborer
Floor Preparation, Core Drilling
Jackhammer/Chipping Gun or Pavement Breaker
Laser Instrument Operator
Nozzlemen, Pumpcrete or Shotcrete
Pipelayer Helper

						L&M	LEG	
N2203	Group III, including:	41.69	9.55	21.16	1.65	0.30	0.20	74.55

Miner
Retimberman

						L&M	LEG	
N2204	Group IIIA, including:	45.96	9.55	21.16	1.65	0.30	0.20	78.82

Asphalt Raker, Asphalt Belly Dump Lay Down
Drill Doctor (in the field)
Driller (including, but not limited to wagon drills, air-track drills,
hydraulic drills)
Pioneer Drilling & Drilling Off Tugger (all type drills)
Pipelayer
Powderman (Employee Possessor)
Storm Water Pollution Protection Plan Specialist (SWPPP Specialist)
Traffic Control Supervisor, DOT Qualified

						L&M	LEG	
N2206	Group IIIB, including:	52.10	5.50	21.16	1.65	0.30	0.20	80.91

Driller (including, but not limited to wagon drills, air-track drills,
hydraulic drills)(over 5,000 hours)
Federal Powderman (Responsible Person in Charge)
Grade Checking (setting or transferring of grade marks, line and grade,
GPS, drones)
Pioneer Drilling & Drilling Off Tugger (all type drills)(over 5,000 hours)
Stake Hopper

Wage benefits key: BHR=basic hourly rate; H&W=health and welfare; IAF=industry advancement fund; LEG=legal fund; L&M=labor/management fund; PEN=pension fund; SAF=safety; SUI=supplemental unemployment insurance; S&L=SUI & LEG combined; TRN=training; THR=total hourly rate; VAC=vacation

Class Code	Classification of Laborers & Mechanics	BHR	H&W	PEN	TRN	Other	Benefits	THR
------------	--	-----	-----	-----	-----	-------	----------	-----

Tunnel Workers, Laborers (The area that is south of N63 latitude and west of W138 longitude)

*See per diem note on last page

						L&M	LEG	
S2201	Group I, including:	39.60	9.55	21.16	1.65	0.30	0.20	72.46
	Brakeman							
	Mucker							
	Nipper							
	Storm Water Pollution Protection Plan Worker (SWPPP Worker - erosion and sediment control Laborer)							
	Topman & Bull Gang							
	Tunnel Track Laborer							
S2202	Group II, including:	40.70	9.55	21.16	1.65	0.30	0.20	73.56
	Burning & Cutting Torch							
	Certified Erosion Sediment Control Lead (CESCL Laborer)							
	Concrete Laborer							
	Floor Preparation, Core Drilling							
	Jackhammer/Chipping Gun or Pavement Breaker							
	Laser Instrument Operator							
	Nozzlemen, Pumpcrete or Shotcrete							
	Pipelayer Helper							
S2203	Group III, including:	41.69	9.55	21.16	1.65	0.30	0.20	74.55
	Miner							
	Retimberman							
S2204	Group IIIA, including:	45.96	9.55	21.16	1.65	0.30	0.20	78.82
	Asphalt Raker, Asphalt Belly Dump Lay Down							
	Drill Doctor (in the field)							
	Driller (including, but not limited to wagon drills, air-track drills, hydraulic drills)							
	Pioneer Drilling & Drilling Off Tugger (all type drills)							
	Pipelayer							
	Powderman (Employee Possessor)							
	Storm Water Pollution Protection Plan Specialist (SWPPP Specialist)							
	Traffic Control Supervisor, DOT Qualified							
S2206	Group IIIB, including:	52.10	5.50	21.16	1.65	0.30	0.20	80.91
	Driller (including, but not limited to wagon drills, air-track drills, hydraulic drills)(over 5,000 hours)							
	Federal Powderman (Responsible Person in Charge)							
	Grade Checking (setting or transferring of grade marks, line and grade, GPS, drones)							
	Pioneer Drilling & Drilling Off Tugger (all type drills)(over 5,000 hours)							

Wage benefits key: BHR=basic hourly rate; H&W=health and welfare; IAF=industry advancement fund; LEG=legal fund; L&M=labor/management fund; PEN=pension fund; SAF=safety; SUI=supplemental unemployment insurance; S&L=SUI & LEG combined; TRN=training; THR=total hourly rate; VAC=vacation

Class Code	Classification of Laborers & Mechanics	BHR	H&W	PEN	TRN	Other	Benefits	THR
Tunnel Workers, Laborers (The area that is south of N63 latitude and west of W138 longitude)								
*See per diem note on last page								

						L&M	LEG	
S2206	Group IIIB, including:	52.10	5.50	21.16	1.65	0.30	0.20	80.91
	Stake Hopper							

Tunnel Workers, Power Equipment Operators								
*See per diem note on last page								

						L&M		
A2207	Group I	52.51	11.40	14.75	1.00	0.10	0.05	79.81

						L&M		
A2208	Group IA	54.60	11.40	14.75	1.00	0.10	0.05	81.90

						L&M		
A2209	Group II	51.60	11.40	14.75	1.00	0.10	0.05	78.90

						L&M		
A2210	Group III	50.74	11.40	14.75	1.00	0.10	0.05	78.04

						L&M		
A2211	Group IV	43.36	11.40	14.75	1.00	0.10	0.05	70.66

* Per diem is an established practice for this classification. This means that per diem is an allowable alternative to board and lodging if all criteria are met. See 8 AAC 30.051-08 AAC 30.056, and the per diem information on page vii of this Pamphlet.

** Work in combination of classifications: Employees working in any combination of classifications within the diving crew (working diver, standby diver, and tender) in a shift are paid in the classification with the highest rate for a minimum of 8 hours per shift.

Wage benefits key: BHR=basic hourly rate; H&W=health and welfare; IAF=industry advancement fund; LEG=legal fund; L&M=labor/management fund; PEN=pension fund; SAF=safety; SUI=supplemental unemployment insurance; S&L=SUI & LEG combined; TRN=training; THR=total hourly rate; VAC=vacation								
--	--	--	--	--	--	--	--	--

Shipyard Rates Addendum

This Addendum was developed to address the specialized industry of shipbuilding/repair in Alaska, as it relates to public works. For the purposes of providing rates for shipyard work the Department is adopting Shipyard rates from the state of Washington (King County). These rates only apply to work done in shipbuilding/repair in Alaska, under a public contract. This addendum will be updated two times a year to coincide with the corresponding Issue of *Laborers and Mechanics MINIMUM RATES OF PAY*.

Class Code	BHR H&W PEN TRN Other Benefits THR
Shipyard Workers *See total hourly(THR) note below	
A2300	Ship Building/Repair Boilermaker 50.35
A2305	Ship Building/Repair Carpenter 50.95
A2310	Ship Building/Repair Crane Operator 45.06
A2315	Ship Building/Repair Electrician 50.42
A2320	Ship Building/Repair Heat & Frost Insulator 84.84
A2325	Ship Building/Repair Laborer 50.95
A2330	Ship Building/Repair Mechanist 50.95
A2335	Ship Building/Repair Operating Engineer 45.06
A2340	Ship Building/Repair Painter 50.95
A2345	Ship Building/Repair Pipefitter 50.95
A2350	Ship Building/Repair Rigger 50.35
A2355	Ship Building/Repair Sheet Metal 50.35
A2360	Ship Building/Repair Shipwright 50.95
A2365	Ship Building/Repair Warehouse 45.06

*The THR includes the base hourly rate (BHR) and fringe benefits. Employers must pay a BHR and fringe benefit package that adds up to the THR. Fringe benefits included in the THR can be paid to employees in three ways; paid into a union trust fund, into an approved benefit plan, or paid directly on the paycheck as gross wages.

Wage benefits key: BHR=basic hourly rate; H&W=health and welfare; IAF=industry advancement fund; LEG=legal fund; L&M=labor/management fund; PEN=pension fund; SAF=safety; SUI=supplemental unemployment insurance; S&L=SUI & LEG combined; TRN=training; THR=total hourly rate; VAC=vacation

EXHIBIT “B” – General Provisions – Service Contracts
TABLE OF CONTENTS
FOR EXHIBIT “B”
GENERAL PROVISIONS

Clause		
1.	APPLICABLE LAW AND DISPUTES	62
2.	ASSIGNMENT AND SUBCONTRACTING	62
3.	AUDIT OF RECORDS	62
4.	BUYER FURNISHED PROPERTY	62
5.	BUYER’S INSPECTORS	63
6.	BUYER’S RIGHT TO USE INFORMATION DISCLOSED BY SELLER	63
7.	CALENDAR DATES	63
8.	CHANGES	63
9.	CLAUSE HEADINGS	63
10.	COMPLIANCE WITH FEDERAL, STATE AND LOCAL LAWS	63
11.	CONFIDENTIAL RELATIONSHIP	63
12.	CONTINUITY OF SERVICES	64
13.	CONTRACT ADMINISTRATION	64
14.	DEFAULT	64
15.	DEFINITIONS	65
16.	EXCUSABLE DELAYS	65
17.	INDEMNITY	66
18.	INSPECTION OF SERVICES	66
19.	INSURANCE	66
20.	LAWS, ORDINANCES, RULES & REGULATIONS	67
21.	MODIFICATION OF ORDER	67
22.	NO WAIVER OF CONDITIONS	68
23.	NON-DISCRIMINATION	68
24.	NOTICE TO THE BUYER OF LABOR DISPUTES	68
25.	OPERATION AND STORAGE AREAS	68
26.	OTHER CONTRACTS	68
27.	PERMITS AND RESPONSIBILITIES	68
28.	PROTECTION OF BUILDINGS, EQUIPMENT AND VEGETATION	69
29.	PUBLIC RELEASE OF INFORMATION	69
30.	REMOVAL OF SELLER’S UNSATISFACTORY EMPLOYEES	69
31.	SAFETY	69
32.	SUPERINTENDENCE BY SELLER	69
33.	TAXES	69
34.	TITLE AND RISK OF LOSS	69
35.	WARRANTY OF SERVICES	69
36.	TERMINATION FOR CONVENIENCE	70
37.	TERMINATION FOR DEFAULT	70
38.	TERMINATION CONTINGENCY	70
39.	STRICT LOYALTY	70
40.	DEBARMENT	70

FNSB School District is hereinafter referred to as "Buyer".

The following conditions apply to any Purchase Order issued by the Buyer as a result of this solicitation.

1. **APPLICABLE LAW AND DISPUTES**

Any dispute with respect to this Order shall be governed by the laws of Alaska and FNSB School Board Policies. Any appeal of an administrative order and any original action to enforce any provision of this agreement or to obtain any relief from remedy in connection with this agreement may be brought only in the Superior Court for the Fourth Judicial District of Alaska.

2. **ASSIGNMENT AND SUBCONTRACTING**

This Order or any interest hereunder shall not be assigned or transferred by the Seller without the prior written consent of the Buyer. The Buyer shall not consent to any proposed assignment unless and until the Seller furnishes the Buyer with two (2) executed copies of the assignment. The Seller shall not subcontract any of the work required by this Contract, without the prior written approval of the Buyer.

3. **AUDIT OF RECORDS**

Seller shall keep adequate records of direct labor costs and all other costs of the performance of this Contract, which shall be subject to audit by a certified public accounting firm designated by the Buyer in the event of termination for convenience or with respect to any work for which the price or any part thereof is based on time and cost of materials.

4. **BUYER FURNISHED PROPERTY**

a. **Furnished Property**

The Buyer shall deliver to the Seller for incorporation into the work to be performed, the property described in the SOW as Buyer furnished property, hereinafter referred to as "property." All property shall be identified as property of the Buyer. The property shall be used exclusively on the work required by this Contract. The Seller shall establish procedures for the inventorying, storage, maintenance, and inspection of the property. Records of such shall be made available to the Buyer upon request.

b. **Delivery**

The performance schedule of this Contract is based upon the premise that property suitable for use will be delivered to the Seller at the times stated in the SOW or, if not so stated, in sufficient time to enable the Seller to meet the performance schedule. If the property is not delivered to the Seller by such time or times, the Buyer shall, upon timely written request made by the Seller, make a determination of the extent of the delay, if any, incurred by the Seller thereby, and shall equitably adjust the performance schedule or the Contract price, or both, and any other contractual provision affected by such delay, in accordance with the "Changes" clause. If the property is received by the Seller in a condition which makes it not suitable for its intended use, the Seller shall, upon receipt thereof, notify the Buyer of such fact. Upon such notice, the Buyer shall advise the Seller of the disposition to be made of the property and issue a change order, with respect to such property, under the "Changes" clause.

c. **Risk of Loss**

The Seller assumes the risk of, and shall be responsible for, any loss or damage to property furnished under this clause upon its deliver to the Seller. Seller shall maintain adequate insurance to cover this risk.

d. **Access**

The Buyer, and any persons designated by the Buyer, shall at all reasonable times have access to the premises where the property is located for the purpose of inspecting the property.

e. **Changes in Property**

1. By notice in writing, the Buyer may:

- a. Increase, decrease, or withdraw the property provide or to be provide by the Buyer under this clause, or

- b. Substitute other property for property to be provided by the Buyer. The Seller shall promptly take such action as the Buyer may direct with respect to the removal and shipping of property delivered and later withdrawn by such notice.
- 2. Upon any increase, decrease, withdrawal or substitution of property, the Buyer, upon the written request of the Seller or on the Buyer's own accord, shall equitably adjust such contractual provisions as may be affected by the increase, decrease, withdrawal or substitution in accordance with the "Changes" clause.

f. Title

Title to all property shall remain in the Buyer.

5. **BUYER'S INSPECTORS**

The work shall be subject to inspection by the Buyer's appointed inspectors to insure strict compliance with the terms of the Contract. The inspectors are not authorized to change any provision of the specifications or any other part of this Contract without written authorization of the Buyer, nor shall the presence or absence of an inspector relieve the Seller from any requirements of the Contract.

6. **BUYER'S RIGHT TO USE INFORMATION DISCLOSED BY SELLER**

Unless otherwise expressly set forth to the contrary in this Contract, the Buyer shall have the right to use and have used, for any purpose, unpatented information concerning the services performed by the Seller hereunder which Seller may disclose to the Buyer during performance of this Contract if such information is furnished without restrictions on its use.

7. **CALENDAR DATES**

All periods of days referred to in this Contract shall be measured in calendar days.

8. **CHANGES**

The Buyer may, at any time, and from time to time by written order from the Buyer's Purchasing Department to the Seller, make changes in any one or more of the following: (a) method of shipment or packing; and (b) time and/or place of delivery; and (c) the quantity of items ordered. If such change causes an increase or decrease in the price of the Order or the time required to perform, an equitable adjustment shall be made and the Order modified in writing accordingly. Any claim by the Seller hereunder must be asserted in writing within fifteen (15) days from the date the change is ordered. Whether made pursuant to this clause or by mutual agreement, changes shall not be binding upon the Buyer, except when confirmed in writing by a member of the Buyer's Purchasing Department.

9. **CLAUSE HEADINGS**

The headings and subheadings of clauses contained herein are used for convenience and ease of reference and shall not limit the scope or intent of the clause.

10. **COMPLIANCE WITH FEDERAL, STATE AND LOCAL LAWS**

FNSBSD will comply with the Uniform Administrative Requirements, Cost Principles and Audit Requirements for Federal Awards, [2 CFR 200.318/2 CFR 200.319/7 CFR 3016.36].

The Seller shall comply with all applicable Federal, State and Local laws and ordinances and all lawful orders, rules and regulations thereunder, including the applicable provisions of the Fair Labor Standards Act of 1938 as amended (29 U.S.C. Sec. 201219) and the Occupational Safety and Health Act of 1970 and all regulations and standards and any amendments issued pursuant thereto. The Seller warrants that the items delivered shall comply with the foregoing.

11. **CONFIDENTIAL RELATIONSHIP**

The Seller shall treat as confidential all information supplied by Buyer or obtained by the Seller as a result of performance under this Contract unless such is in the public domain. The Seller shall not disclose any information related to this Contract to any person not authorized by Buyer in writing to receive it.

12. **CONTINUITY OF SERVICES**

- a. The Seller recognizes that: (1) the services provided under this Contract are vital to the Buyer's operations, (2) continuity thereof must be maintained at a consistently high level without interruption, (3) upon expiration of this Contract or termination of this Contract for convenience or default, a successor either the Buyer or another seller may continue the services performed hereunder, (4) the successor will require phase-in training and assistance, (5) the seller's cooperation is required in order to effect an orderly and efficient transition to a successor.
- b. Therefore, the Seller shall, upon written notification by the Buyer, provide phase-in and phase-out (PIPO) services for up to sixty (60) days after expiration or termination of this Contract. Such notice shall be given sixty (60) days prior to Contract expiration or concurrently with the notice of termination. After notification, the Seller shall negotiate in good faith with a successor in determining the nature and extent of the PIPO services, including the cost thereof and a mutually acceptable detailed plan for PIPO operations. The plan shall have a training program and specify a date for shifting the responsibilities to the successor for each division of work set forth in the plan. The plan shall be subject to the approval of the Buyer.
- c. The Seller shall provide sufficient experienced personnel during the PIPO period to insure that the services performed under this Contract are maintained at a high level of proficiency.
- d. The Seller shall be reimbursed for all reasonable PIPO costs, which are those costs accruing within the agreed period after Contract expiration or termination which result from the PIPO operations. A profit shall be paid on said costs unless the Contract has been terminated for default.
- e. The Seller shall cooperate with the successor in allowing as many of the Seller's personnel as practicable to remain on the job and to transfer to the successor in order to enhance the continuity and consistency of the services required under this Contract. Therefore, the Seller shall furnish to the successor the necessary personnel records and allow the successor to conduct on-site interviews with the Seller's employees. If said employees are agreeable to the transfer and are accepted by the successor, then the Seller shall release them for employment by the successor at a mutually acceptable date and shall negotiate the transfer of their earned fringe benefits, if any, to the successor.

13. **CONTRACT ADMINISTRATION**

Notwithstanding any other provisions of this Contract or any document referenced therein, the Buyer's Director of Procurement, or cognizant Contract Administrator are the only individuals authorized to make the changes in or redirect the work required by this Contract. Where the Buyer's approval is required under the terms of this Contract, it shall be construed to mean the approval of the Buyer's Director of Procurement or the cognizant Contract Administrator. In the event the Seller effects any change at the direction of any other person, the change will be considered as having been made without authority and an adjustment shall not be made in Contract price or performance schedule as a result thereof.

14. **DEFAULT**

- a. The Buyer may terminate this Order in whole or in part by written, emailed, or FAX notice:
 - i. if the Seller shall become insolvent or make a general assignment for the benefit of creditors, or
 - ii. if the Seller shall become insolvent or make a general assignment for the benefit of creditors, or
 - iii. if a petition under any bankruptcy act or similar statute is filed by or against the Seller and is not vacated within ten (10) days after it is filed, or
 - iv. if the Seller fails to make delivery of the items or to perform the services within the time specified in this Order, or any increments thereof or extensions thereto, or
 - v. if the Seller fails to perform any other obligations under this Order, or so fails to make progress, so as to endanger performance of this Order, or

- vi. if the Seller's financial condition shall become such as to endanger completion of performance.
- b. If the Buyer terminates this Order in whole or in part as provided in paragraph (9.1) of this clause, the Buyer may procure, upon such terms and in such manner as the Buyer may deem appropriate, items similar to those terminated, and the Seller shall be liable to the Buyer for any excess costs of such similar items; however, the Seller shall continue the performance of this Order to the extent not terminated,
- c. The rights and remedies of the Buyer provided in this clause shall not be exclusive, and are in addition to any others rights and remedies provided by law or under this Order.

15. DEFINITIONS

As used in this Contract, the following terms shall have the meanings set forth below:

TERM	MEANING
1. "Advise"	Advise in writing.
2. "Appoint"	Appoint in writing
3. "Approval"	Approval in writing
4. "Buyer"	Person or persons designated in writing who are authorized to act on behalf of the Buyer. This designation shall be made by the Buyer on or before the date work commences under this Contract.
5. "Change Order"	A written order signed by the Buyer directing the Seller to make changes in the work without the consent of the Seller.
6. "Contract Amendment"	A written alteration in any part of the Contract whether accomplished by unilateral action in accordance with a contract provision, or by mutual action of the parties. It includes change orders and notices of termination.
7. "Designate"	Designate in writing.
8. "Direction"	Direction in writing.
9. "Includes"	Includes but is not limited to.
10. "Item"	Hardware, data, software, materials, spare parts and other articles to be delivered or services to be performed.
11. "May"	May is permissive, however, the words "no person may" mean that no person is required, authorized, or permitted to do the act prohibited.
12. "Shall"	Shall is imperative.
13. "Statement of Work"	All specifications, maps, data, and other information included or referenced in the Statement of Work. "SOW"
14. "Subcontractor(s)"	All persons, vendors, and entities furnishing work, property, or services to the Seller for use on this Contract.
15. "Work"	Includes equipment, installation, material, and services.

16. EXCUSABLE DELAYS

The Seller shall not be liable for damages, including liquidated damages, if any, for delays in performance or failure to perform due to causes beyond the control and without the fault or negligence of the Seller. Such causes include but are not limited to, acts of God, acts of the public enemy, acts of the United States Government, fires, floods, epidemics, quarantine restrictions, strikes, freight embargoes, or unusually

severe weather. When any delays in delivery will occur or are anticipated, the Seller shall immediately give notice thereof to the Buyer.

17. **INDEMNITY**

Except for claims arising out of acts caused by the sole negligence of the Buyer, its agents, servants or employees, the Seller agrees to indemnify and hold harmless the School District, its agents, servants and employees, from acts or omissions of any nature whatsoever of the Seller, its agents, servants and employees, causing injury to, or death of person(s) or damage to property during the term of this contract, and from any expense incident to the defense of the School District therefrom. The Seller agrees to hold the FNSB School District harmless from and to defend it against, any and all claims arising from the purchase, installation, and/or use of the equipment, articles and/or materials which are the subject of this Order.

18. **INSPECTION OF SERVICES**

- a. All services shall be subject to inspection and test by the Buyer, to the extent practicable at all times and places during the term of the Contract and during PIPO operations. All inspections and tests by the Buyer shall be made in such a manner as to not unduly delay the work.
- b. If any services performed hereunder are not in conformity with the requirements of this Contract, the Buyer shall have the right to require the Seller to perform the services again in conformity with the requirements of the Contract, at no expense to the Buyer. When the defective services performed are of such a nature that the defect cannot be corrected by re-performance of the services, the Buyer shall have the right to: (1) require the Seller to immediately take all steps necessary to ensure future performance of the services in conformity with the requirements of the Contract; (2) and reduce the Contract price to reflect the reduced value of the services performed,. If the Seller fails to perform promptly the services again or to take necessary steps to ensure future performance of the services in conformity with the requirements of the Contract, the Buyer shall have the right to either (a) by Contract or otherwise have the services performed in conformity with the Contract requirements and charge the Seller any cost incurred by the Buyer that is directly related to the performance of such service; or (b) terminate this Contract for default pursuant to the "Termination for Default" clause.
- c. Records of all inspections and tests by Seller shall be kept complete and available to Buyer during performance of this Contract and for such longer period as may be specified elsewhere in this Contract.

19. **INSURANCE**

Before commencing work, Seller shall procure and maintain insurance of the limits and kinds as specified in the SOW and enumerated hereunder, with an insurance company rated as "Excellent" or "Superior" by A. M. Best Company. Certificates of such insurance issued by the Seller's insurance carrier shall be filed with the Buyer before commencement of work and shall set forth the following:

- a. LIMITS: The contractor shall obtain insurance for not less than the following limits:
 - i. Commercial general liability: \$1,000,000 limit
 - ii. Comprehensive automotive liability: \$1,000,000 combined single limit
 - iii. Crime/Abuse/Molestation: \$1,000,000.00 limit, each
- b. AUTOMOBILE LIABILITY INSURANCE:
 - i. Comprehensive automotive liability: \$1,000,000.00 combined single limit.
 - ii. All automobiles must be insured when the contractor is using them to do work under this agreement. The following coverages automatically qualify:
 - (a) All autos or

- (b) All owned, non-owned, and hired autos.
 - iii. If the contractor submits insurance covering only scheduled autos, then the contractor agrees to use only those insured vehicles for the work and to insure any additional vehicles before using them for the work. If the contractor submits insurance covering only scheduled autos, then the insurance coverage must also include all non-owned autos, the contractor must provide a copy of the scheduled vehicles, and the contractor must assure the Buyer in writing that any additional vehicles are covered by liability insurance at the required limits before the vehicles are used for work under this agreement.
- c. **WORKER'S COMPENSATION:** The contractor understands that all employees must be covered by worker's compensation insurance during the term of the contract with the School District.
 Workers compensation: \$100,000 each accident, \$500,000 disease-policy limit, and \$100,000 disease-each employee. This policy must be endorsed with a waiver of subrogation in favor of the School District.
- d. **ALTERNATE COVERAGE:** A combination of primary and excess/umbrella policies may be used to fulfill the insurance requirements of the section.
- e. **ADDITIONAL INSURED:** The School District must be listed as an additional insured in the contractor's commercial general liability policy.
- f. **CERTIFICATE OF INSURANCE:** Before starting work, the contractor will provide a certificate of insurance in a form acceptable to the School District showing that the contractor has the required insurance coverage.
- g. **CANCELLATION:** The School District must receive notice if the contractor's insurance is going to be canceled, not renewed, or changed in some important way. The certificate of insurance must say that the insurer will notify the School District at least 30 days before the insurer cancels, refuses to renew, or materially changes the coverage.
- h. **INCREASED COVERAGE:** During the contract term, the School District might require higher limits of insurance than those listed in this section. If the School District requires such insurance, and the insurer raises its premium as a result of higher limits, then the Borough will pay the contractor the difference between the old and the new premiums.
- i. Certificates of Insurance shall be issued to: Fairbanks North Star Borough and School District

P.O. Box 71267
Fairbanks, AK 99707

20. **LAWS, ORDINANCES, RULES & REGULATIONS**

The Seller shall comply with all applicable laws, ordinances, rules and regulations including Federal, State, and Municipal authorities and departments relating to or affecting the work hereunder or any part thereof, and shall secure and obtain any and all permits, licenses and consents as may be necessary in connection therewith. The Seller agrees to indemnify and hold harmless the Buyer from and against any and all liability or consequential damage, including but not limited to, any fines, penalties, or other corrective measures the School District may suffer resulting from any violation by the contractor of such laws, ordinances, rules, and regulations.

The Contractor and its employees shall refrain from the use of alcohol, drugs, marijuana, tobacco or nicotine, including any smoking, electronic cigarette, or vapor device while on School District property. Tobacco is defined as tobacco and nicotine in any form as well as nicotine delivery devices, such as, but not limited to, electronic cigarettes and vapor pens, but excludes nicotine replacement therapy products approved by the U.S. Food and Drug Administration for the purpose of smoking/nicotine cessation.

21. **MODIFICATION OF ORDER**

This Order contains all the agreements and conditions of sale and no course of dealing or usage of the trade shall be applicable unless expressly incorporated in this Order. The terms and conditions contained in this

Order may not be added to, modified, superseded or otherwise altered except by a written modification signed by an authorized representative of the Buyer's Purchasing Department and delivered by the Buyer to the Seller. Each delivery shall be deemed to be only upon the terms and conditions contained in this Order notwithstanding any terms and conditions that may be contained in any acknowledgment, invoice or other form of the Seller, and notwithstanding the Buyer's act of accepting or paying for any delivery or similar act of the Buyer.

22. **NO WAIVER OF CONDITIONS**

The Buyer's failure to insist upon strict compliance shall not be deemed to be a waiver of any right, and waiver of a right under this Order shall not constitute a waiver of any other right or waiver of any other default under this Order.

23. **NON-DISCRIMINATION**

The Fairbanks North Star Borough School District and all covered subcontractors shall abide by the requirements of 41 CFR §§ 60-1.4(a), 29 CFR Part 741, Appendix A to Subpart A, 60-300.5(a) and 60-741.5(a). These regulations prohibit discrimination against qualified individuals based on their status as protected veterans or individuals with disabilities, and prohibit discrimination against all individuals based on their race, color, religion, sex, or national origin. Moreover, these regulations require that covered prime contractors and subcontractors take affirmative action to employ and advance in employment individuals without regard to race, color, religion, sex, national origin, protected veteran status or disability.

The Seller shall comply with the applicable provisions of the Federal Civil Rights Act of 1964 and all amendments thereto, and the Equal Employment Opportunity Act and all amendments thereto, the FNSB School Board Policy, article 441, and all regulations issued thereunder by the Federal and State governments. If the contractor fails to comply with such acts and regulations, the School District shall have the right to immediately terminate this contract.

24. **NOTICE TO THE BUYER OF LABOR DISPUTES**

- a. Whenever the Seller has knowledge that any actual or potential labor dispute is delaying or threatens to delay the timely performance of this Contract, the Seller shall immediately give notice thereof, including all relevant information with respect thereto, to the Buyer.
- b. The Seller shall insert the substance of this clause, including this paragraph, in any subcontracts hereunder. Each such subcontract shall provide that in the event that its timely performance is delayed or threatened by delay by any actual or potential labor dispute, the subcontractor shall immediately notify the Seller of all relevant information with respect to such dispute.

25. **OPERATION AND STORAGE AREAS**

All operation of the Seller, including storage of materials, shall be confined to areas authorized or approved by the Buyer. No unauthorized or unwarranted entry upon, passage through, or storage or disposal of materials, shall be made upon other premises. The Seller shall hold and save the Buyer, its employees, officers and agents, free and harmless from liability of any nature of kind arising from any use, trespass or damage incurred by Seller's operations on premises of third persons.

26. **OTHER CONTRACTS**

The Buyer may undertake or award other contracts for additional work, and the Seller shall fully cooperate with such other contractors and Buyer's employees and carefully fit its own work to such additional work as may be contracted for by the Buyer. The Seller shall not commit or permit any act which will interfere with the performance of work by any other contractor or by Buyer's employees.

27. **PERMITS AND RESPONSIBILITIES**

Without additional expense to the Buyer, the Seller shall be responsible for obtaining any necessary licenses and permits, and for complying with all applicable laws, codes, and regulations, in connection with the prosecution of the work. The Seller shall be responsible for all damages to persons or property that

occur as a result of its fault or negligence. Seller shall take proper safety and health precautions to protect the work, employees of the Buyer and Seller, the public, and the property of others.

28. PROTECTION OF BUILDINGS, EQUIPMENT AND VEGETATION

The Seller shall use reasonable care to avoid damaging existing buildings, structures, equipment and vegetation such as trees, shrubs and grass on the Buyer's facility. If the Seller fails to do so and damages any such buildings, structures, equipment, or vegetation, Seller shall replace or repair the damage at no expense to the Buyer as directed by the Buyer. If Seller fails or refuses to make such repair or replacement, the Seller shall be liable for the cost thereof which may be deducted by the Buyer from payments due or which may become due to the Seller.

29. PUBLIC RELEASE OF INFORMATION

Unless the prior written consent of the Buyer is obtained, the Seller shall not, except as may be required by law or regulations, in any manner advertise or publish or release for publication any statement or information mentioning the Buyer, or the fact that the Seller has furnished or contracted to furnish to the Buyer the services required by this Contract, or quote the opinion of any employee of Buyer.

30. REMOVAL OF SELLER'S UNSATISFACTORY EMPLOYEES

By written notice, the Buyer may require the Seller to remove from the work any employee the Buyer deems incompetent, careless, or otherwise objectionable.

31. SAFETY

- a. Seller shall be responsible for safety related to and during the performance of the work hereunder. Seller shall insure that its employees and the employees of its subcontractors are notified of and observe and abide by all safety regulations and laws including but not limited to those issued by the Buyer, and any revisions of the foregoing that may herein-after be applicable.
- b. Said laws and regulations are minimum requirements for the Seller. Seller shall take any additional precautions necessary or proper under the circumstances to prevent injury to or death of persons and/or damage to property. Compliance with such laws and regulations by the Seller, or Buyer's approval of any actions or procedures of the Seller as provided herein shall not relieve the Seller of its obligations to use due care in performing the work required under this Contract.
- c. Seller shall immediately notify Buyer of any damage to property and/or injury to, or death of, persons that occurs in connection with or is in any way related to the work. Seller shall furnish Buyer a written report of the aforesaid as soon as possible.

32. SUPERINTENDENCE BY SELLER

The Seller shall have a competent foreman or superintendent, satisfactory to the Buyer, on the work site at all times during the performance of work. Said foreman or superintendent shall have the authority to act for the Seller.

33. TAXES

Unless prohibited by law or otherwise stated to the contrary in this Contract, the Seller shall pay and has included in the price of this Contract, any Federal, State or Local Sales Tax, Transportation Tax, or other similar levy which is required to be imposed upon the work or services to be performed.

34. TITLE AND RISK OF LOSS

The Seller shall retain title to and risk of loss or damage to all items to be delivered hereunder until final acceptance by the Buyer at the Buyer's plant.

35. WARRANTY OF SERVICES

Notwithstanding inspection and acceptance by the Buyer or any provision concerning the conclusiveness thereof, the Seller warrants that all services performed under this Contract shall, at the time of acceptance, be free from defects in workmanship and conform to the requirements of this Contract. The Buyer shall give written notice of any such defect or nonconformance to the Seller within thirty (30) days after date of

acceptance by Buyer. Such notice shall state either (1) that the Seller shall correct or re-perform any defective or nonconforming service, or (2) that the Buyer does not require correction or re-performance. If the Seller is required to correct or re-perform, it shall be at no cost to the buyer, and any services corrected or re-performed by the Seller pursuant to this clause shall be subject to all provisions of this clause to the same extent as work initially performed. If the Seller fails or refuses to correct or re-perform, the Buyer may, by contract or otherwise, correct or replace with similar services and charge to the Seller the cost incurred to the buyer thereby or obtain an equitable adjustment in the Contract price. If the Buyer does not require correction or re-performance, the Buyer shall make an equitable adjustment in the Contract price. Except as otherwise provided herein, the bidder warrants that all articles, materials, and equipment supplied under this contract are new, conform to the specifications of this contract, to be of merchantable quality, are fit for the use intended, and are free from defects in materials and workmanship. The District requires that successful bidders honor guarantees and warranties offered by the manufacturer.

36. **TERMINATION FOR CONVENIENCE**

The School District may terminate a contract, in whole or in part, without showing cause upon giving written notice to the Contractor. The School District shall pay all reasonable costs incurred by the Contractor up to the date of termination. The Contractor will not be reimbursed for any anticipatory profits which have not been earned up to the date of termination.

37. **TERMINATION FOR DEFAULT**

If the contractor refuses or fails to prosecute the work or any separate part, with the diligence that will ensure its completion within the time specified in this contract including any extension, or fails to complete the work within this time, the School District may, by written notice to the Contractor, terminate the right to proceed with the work (or the separable part of the work) that has been delayed. In this event, the School District may take over the work and complete it by contract or otherwise, and may take possession of and use any materials, appliances, and plant on the work site necessary for completing the work. The Contractor and its sureties shall be liable for any damage to the School District resulting from the Contractor's refusal or failure to complete the work within the specified time, whether or not the Contractor's right to proceed with the work is terminated. This liability includes any increased costs incurred by the School District in completing the work.

38. **TERMINATION CONTINGENCY**

If the Buyer terminates this Contract in whole or in part under the "Default", "Termination for Convenience", "Price Escalation/de-escalation" clauses, or any other reason authorized by the School Board Procurement Policy or contained herein, the Buyer may cover by procurement of items or services similar to those terminated, upon such terms and in such a manner as the Buyer may deem appropriate.

39. **STRICT LOYALTY**

The Contractor and its employees shall avoid all circumstances and actions which would place the Contractor in a position of divided loyalty with respect to the obligations undertaken under this Contract. If any funds other than Federal appropriated funds have been paid or will be paid to any person for influencing or attempting to influence an officer or employee of any agency, a Member of Congress, an officer or employee of Congress, or an employee of a Member of Congress in connection with a Federal grant or cooperative agreement, the Contractor shall complete and submit Standard Form (SF-LLL), "Disclosure Form to Report Lobbying," in accordance with the instructions therein.

40. **DEBARMENT**

The Contractor certifies that neither it nor its principals are presently debarred, suspended, proposed for debarment, declared ineligible, or voluntarily excluded from participation in the contract by any governmental department or agency. This certification represents a recurring certification made at the time any order is placed under this Contract.

EXHIBIT “C” – BID SCHEDULE & OFFER

TABLE OF CONTENTS

Clause	
BID SCHEDULE.....	71
INVOICING.....	71
NON-COLLUSION CERTIFICATE.....	72
AMENDMENT ACKNOWLEDGEMENT.....	73

1. BID SCHEDULE

Line	Item Number	Description	Unit	Qty
1	988-73-00	Midnight Sun Elementary Fire Pump Transfer Switch Replacement	LN	1

Bid Amount \$ _____

2. INVOICING

The Seller may invoice monthly for services performed. Payment will be made within thirty (30) days after approval of the invoice by the Contract Administrator. Invoices shall specify:

- a. Project Name
- b. Owner’s Project number
- c. Name of Contractor
- d. Purchase Order number
- e. Date of submittal
- f. Application for payment number
- g. Breakdown of the Contract Sum in enough detail to facilitate continued evaluation of Application for Payment and progress reports.

3. NON-COLLUSION CERTIFICATE

THE OFFEROR CERTIFIES THAT -

- a. THE PRICES IN THIS OFFER HAVE BEEN ARRIVED AT INDEPENDENTLY, WITHOUT, FOR THE PURPOSE OF RESTRICTING COMPETITION, ANY CONSULTATION, COMMUNICATION, OR AGREEMENT WITH ANY OTHER OFFEROR OR COMPETITOR RELATING TO (I) THOSE PRICES, (II) THE INTENTION TO SUBMIT AN OFFER, OR (III) THE METHODS OR FACTORS USED TO CALCULATE THE PRICES OFFERED,
- b. THE PRICES IN THIS OFFER HAVE NOT AND WILL NOT BE KNOWINGLY DISCLOSED BY THE OFFEROR, DIRECTLY OR INDIRECTLY, TO ANY OTHER OFFEROR OR COMPETITOR BEFORE CONTRACT AWARD UNLESS OTHERWISE REQUIRED BY LAW, AND
- c. NO ATTEMPT HAS BEEN MADE OR WILL BE MADE BY THE OFFEROR TO INDUCE ANY OTHER CONCERN TO SUBMIT OR NOT TO SUBMIT AN OFFER FOR THE PURPOSE OF RESTRICTING COMPETITION.

(Signature)

(Title)

(Business Name)

(Date)

Amendment Acknowledgement

OFFER

The undersigned agrees, if this offer is accepted, to furnish any or all items upon which prices are offered at the price entered on this schedule, delivered at the designated point, within the time specified.

The offeror certifies that:

1. The prices in this offer have been arrived at independently, without, for the purpose of restricting competition, any consultation, communication, or agreement with any other offeror or competitor relating to (i) those prices, (ii) the intention to submit an offer, or (iii) the methods or factors used to calculate the prices offered,
2. The prices in this offer have not and will not be knowingly disclosed by the offeror, directly or indirectly, to any other offeror or competitor before contract award unless otherwise authorized by law, and
3. No attempt has been made or will be made by the offeror to induce any concern to submit or not to submit an offer for the purpose of restricting competition.

Acknowledgment of Amendments:

Amendment No.

Date

Signature - Individual Authorized to Bind Firm

Date

Typed or Printed Name

Alaska Business License Number:

Business Name:

Mailing Address:

Business Address (Street Address):

Phone:

FAX:

E-mail Bid results to:
